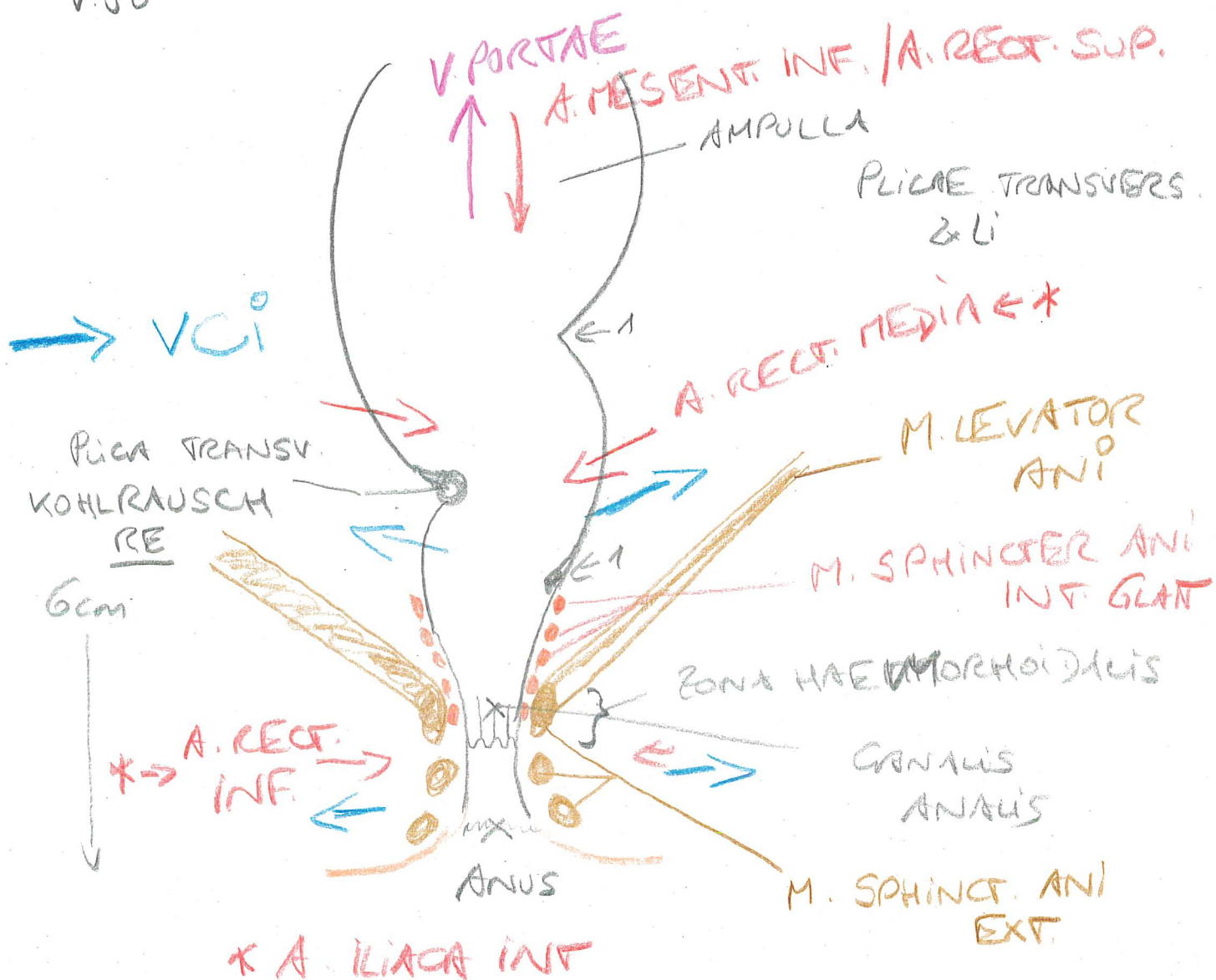


V.00



# TRAGUS URINARIUS

\* HARNBILDENDE ORGANE:

REN DEXT. + SIN.

\* HARNABLEITENDE ORGANE:

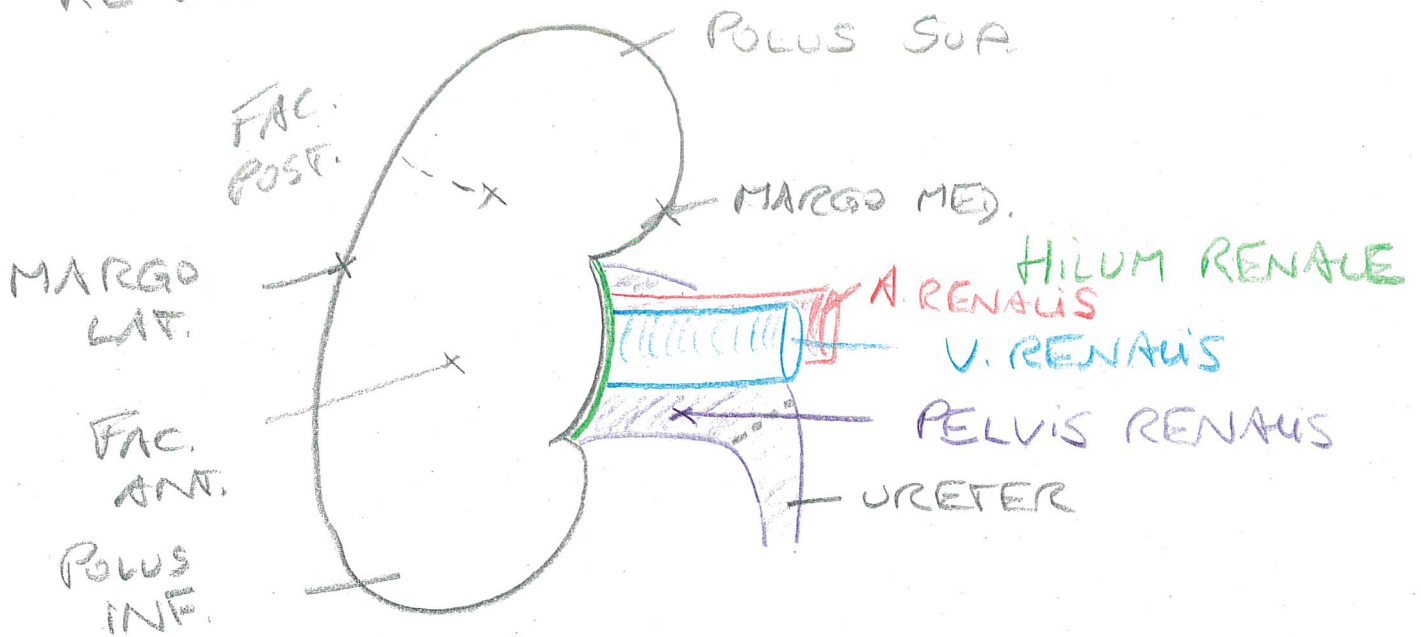
KRANIAL	- PELVIS RENALIS	} 2x RE/ LI
↓	- URETER	
	- VESICA URINARIA	} UNPAAR
	- URETHRA	

REN: SP. RETROPERIT.

RE: TH12 - L3

LI: TH11 - L2

RE u VO



LÄNGSSCHNITT

CORPUSCULUM RENALE  
= GLOMERULUM

↳ NEPHRON

MEDULLA = PYRAMIS

CORTEX

APEX / PAPILLA

HILUM

SINUS RENALIS

- ↳ HARNABL. WEGE
- ↳ BWTGEFÄSSE
- ↳ LYMPHGEF.
- ↳ NERVEN
- ↳ FET



NIERENBECKENKELCHSYSTEM

NEPHRON

VAS AFFERENS

GLOMERULUM

PRIMÄRHARN

VAS EFF

3

1

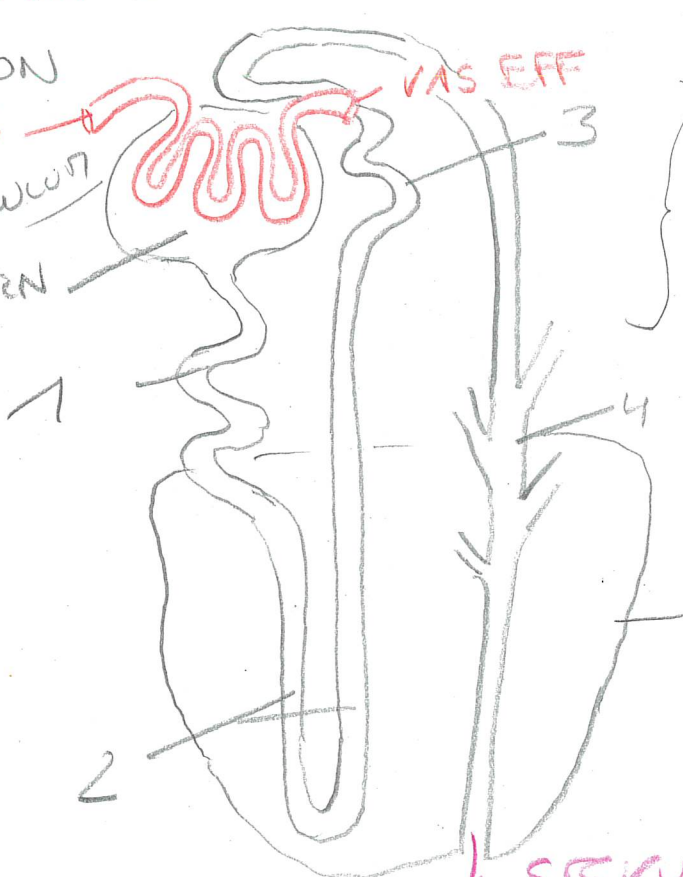
2

4

1. PROX. TUBULUS
2. HENLE-SCHLEIFE
3. DIST. TUBULUS
4. SAMMELROHR H<sub>2</sub>O

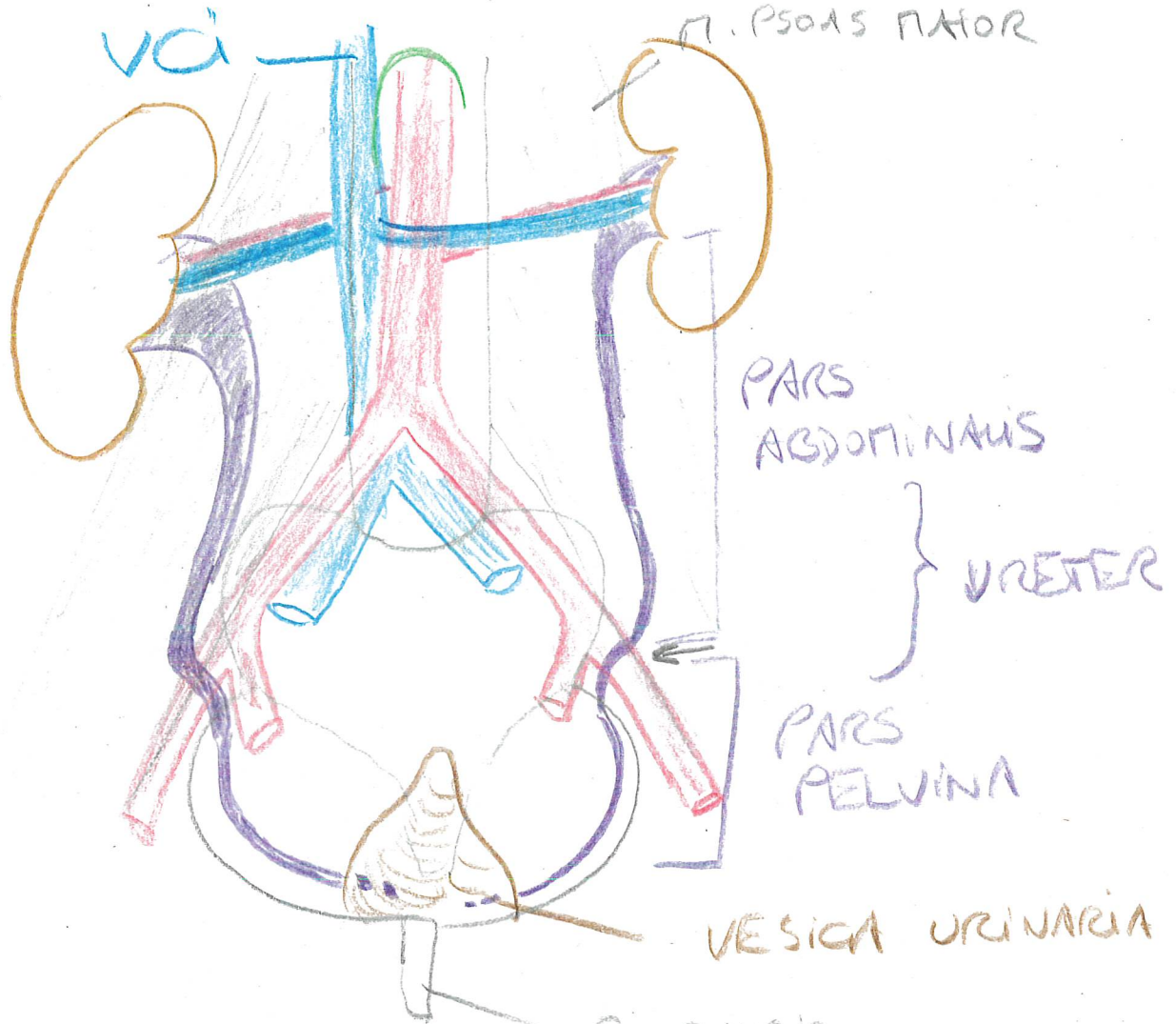
PYRAMIS

↓ SEKUNDÄRHARN



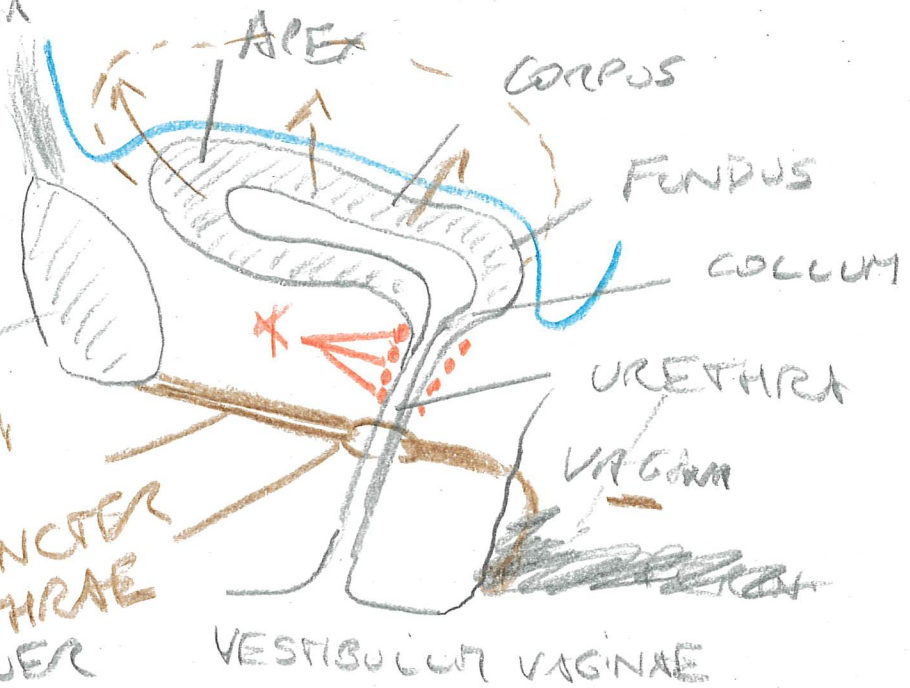


URETER + HARNBLASE



UR. VESICA URINARIA  
+ URETHRA FEMININA

\* M. SPHINCTER  
VESICAE



SYMPHYSE

DIAPHRAGMA  
UROGENITALE

M. SPHINCTER  
URETHRAE  
QUER

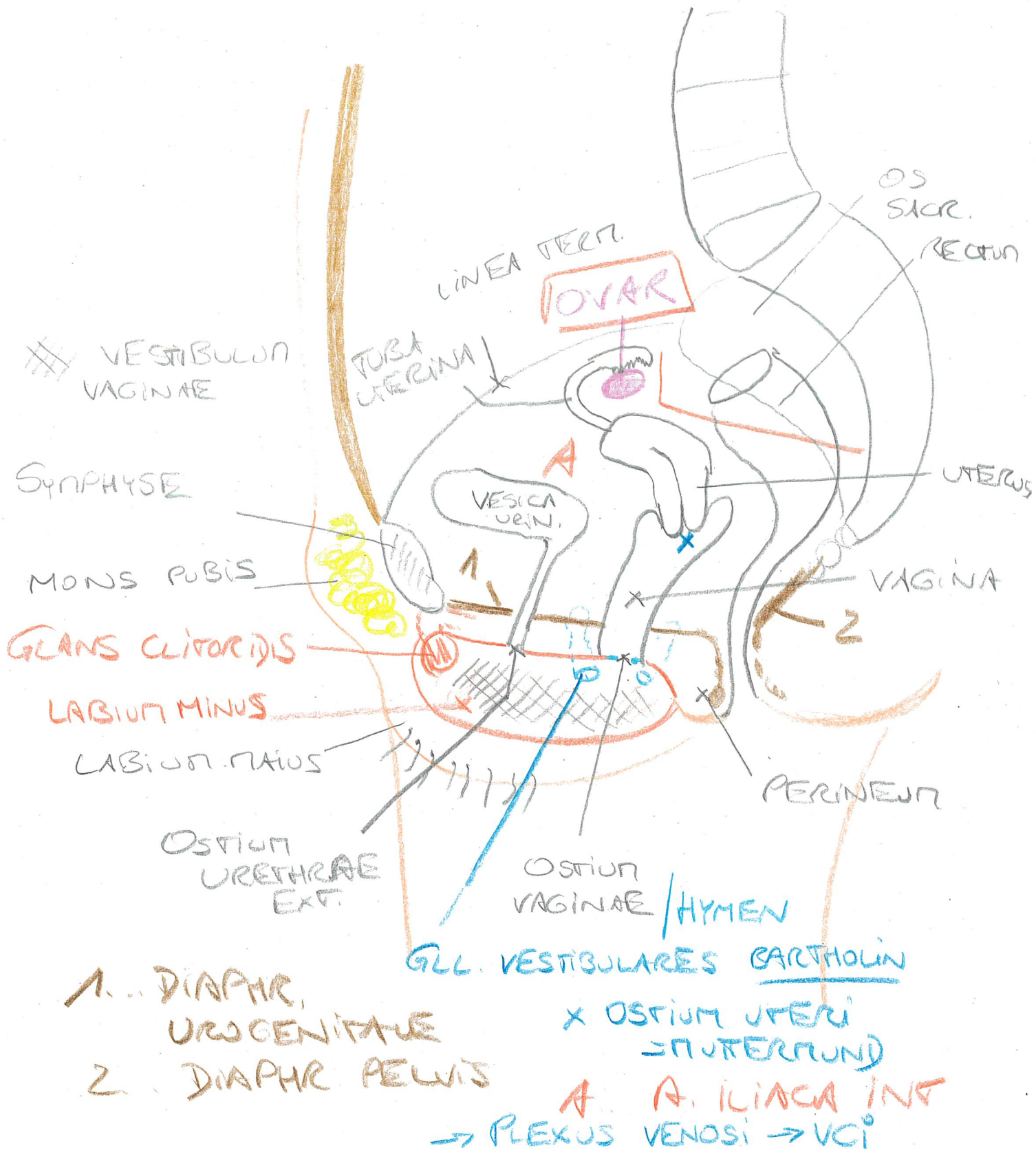
VESTIBULUM VAGINAE

# TRACTUS GENITALIS FEMININUS

\* ORGANA EXTERNA

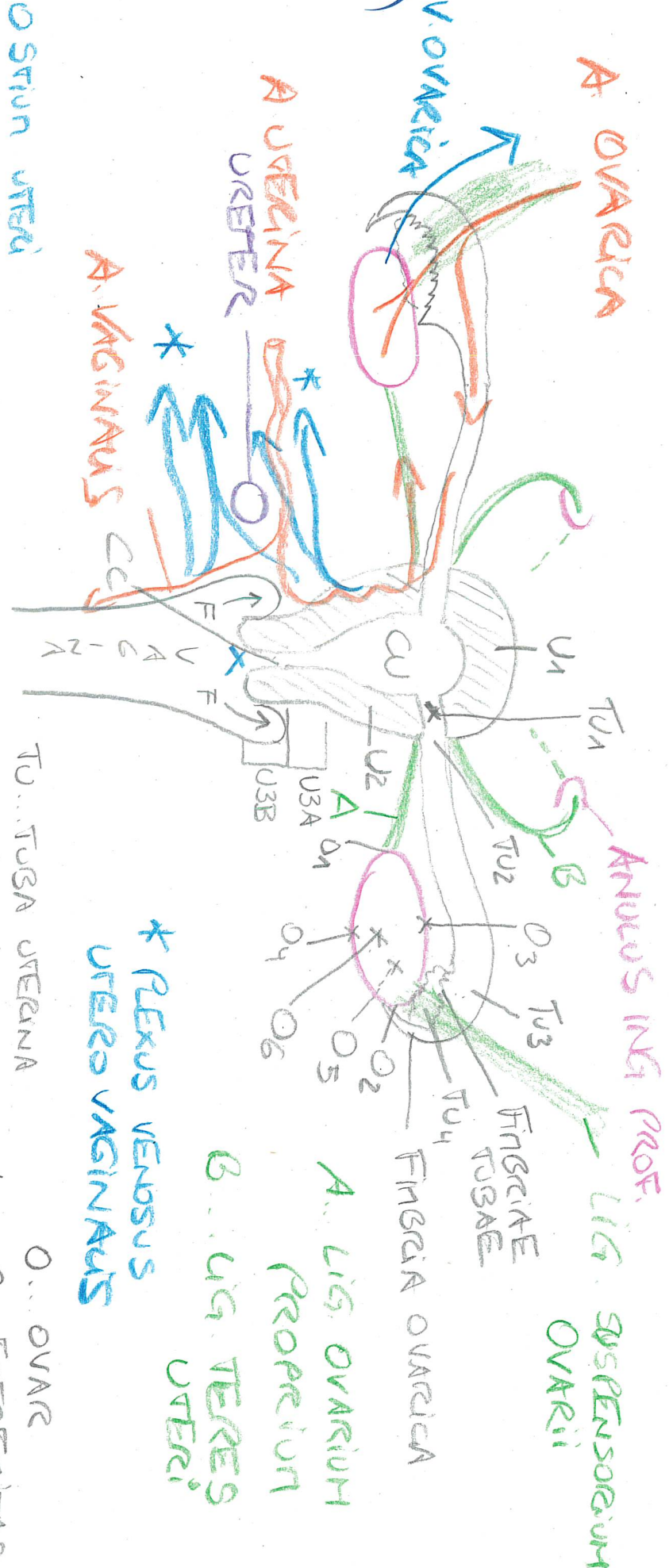
\* ORGANA INTERNA : HYSTERA

MEDIANSIG. SCHNITT





HYSTERA : UTERUS + ADNEXE



A. OVARICA

V. OVARICA

A. VAGINA URETER

A. VAGINAE CC

ANUS INI PROF.

LIG. SUSPENSORIUM OVARII

FIBRILLAE TUBAE

FIBRILLA OVARICA

A. LIG. OVARIIUM PROPRIUM

B. LIG. TERES UTERI

\* PLEXUS VENOSUS UTERO VAGINAE

X OSTIUM UTERI

U... UTERUS

U1... FUNDUS

U2... CORPUS

U3... CERVIX

FPA PARS SUPRAVAGINAE  
FV PARS VAGINAE

CC... CANALIS CERVICIS  
CU... CAVITAS UTERI

ENDOMETRIUM  
MYOMETRIUM  
PERITONEUM

F. FORNIX VAGINAE

TU... TUBA UTERINA

TU1... OSTIUM UTERINUM / PARS INTRAMURATA

TU2... ISTHMUS

TU3... AMPULLA

TU4... OSTIUM ABDOMINALE

O... OVARE

O1... EXTREMITAS UTERINA

O2... EXTR. TUBARIA

O3... MARGO MESOVARICUS

O4... MARGO LIBER

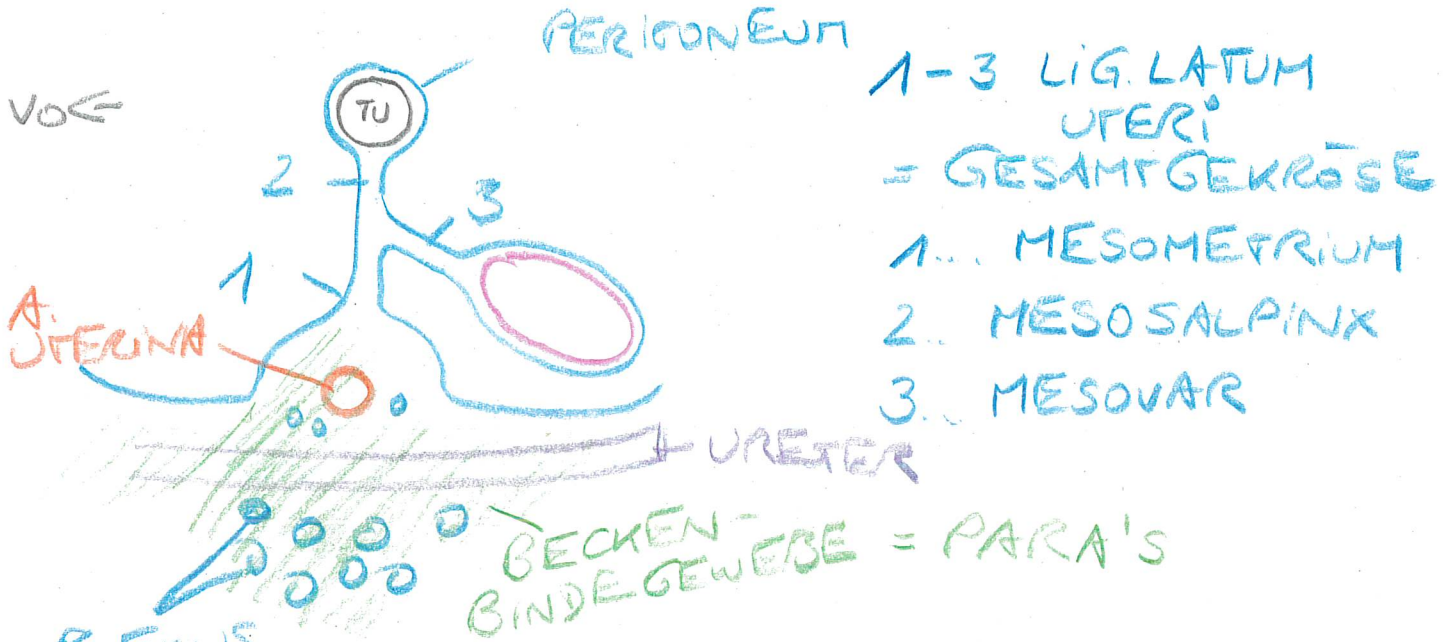
O5... FAC. LAT.

O6... FAC. MED.

UTERUS + ADNEXE:

teilw. "INTRAPERITONEAL"  
HABEN EIN "MESO"

PARAMEDIANSCHNITT



- 1-3 LIG. LATUM UTERI = GESAMTGEKROSE
1. MESOMETRIUM
  2. MESOSALPINX
  3. MESOVAR

PLEXUS VENOSUS

HAUPTPFEILER

- PARAMETRIUM [UTERUS]

- PARACOLPUM [VAGINA]

LIG. CARDINALE  
MACKENRODT

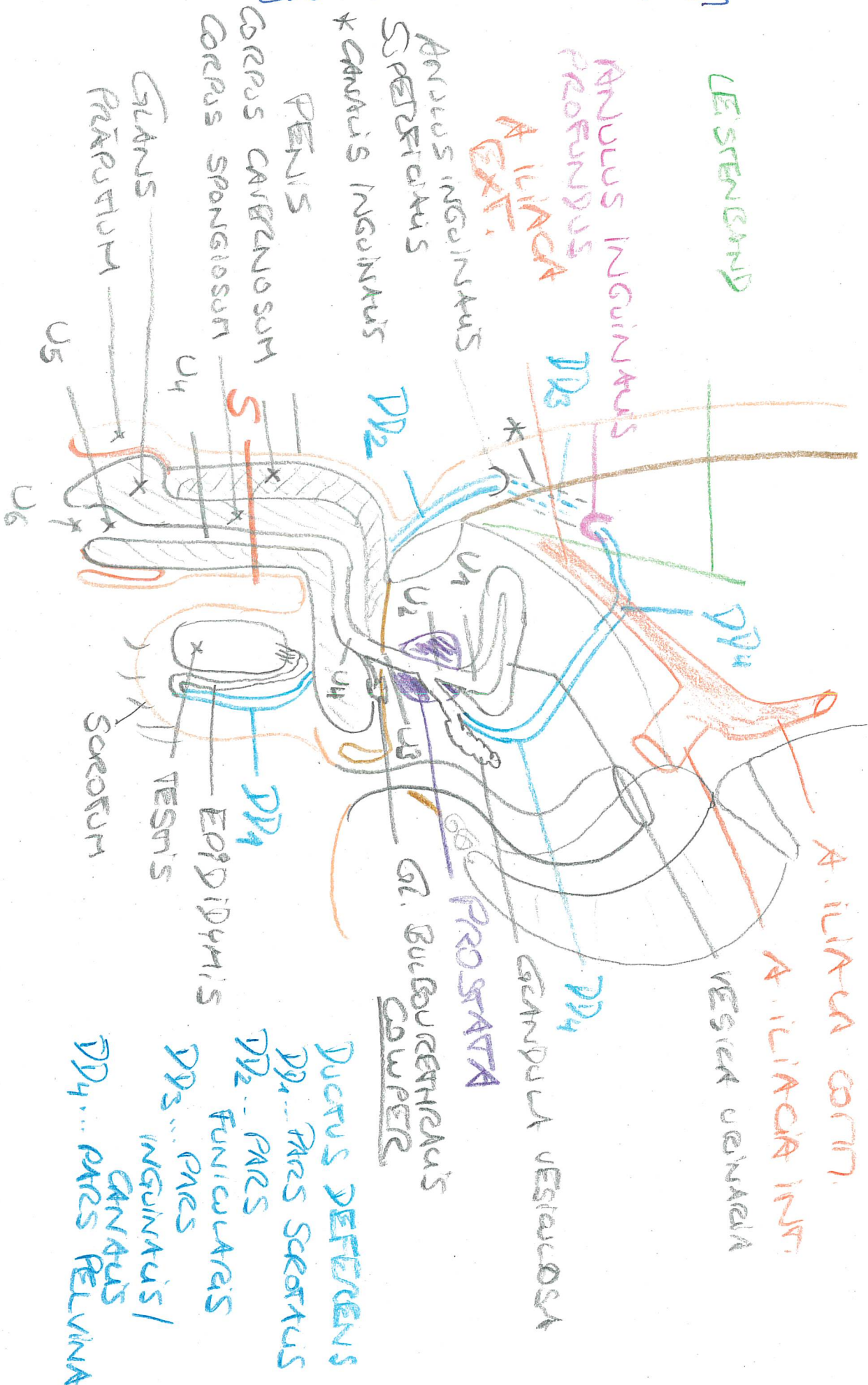
NEBENPFEILER

- PARAPROCTUM

- PARACYSTIUM



# TRACTUS GENITALIS MASCULINUS



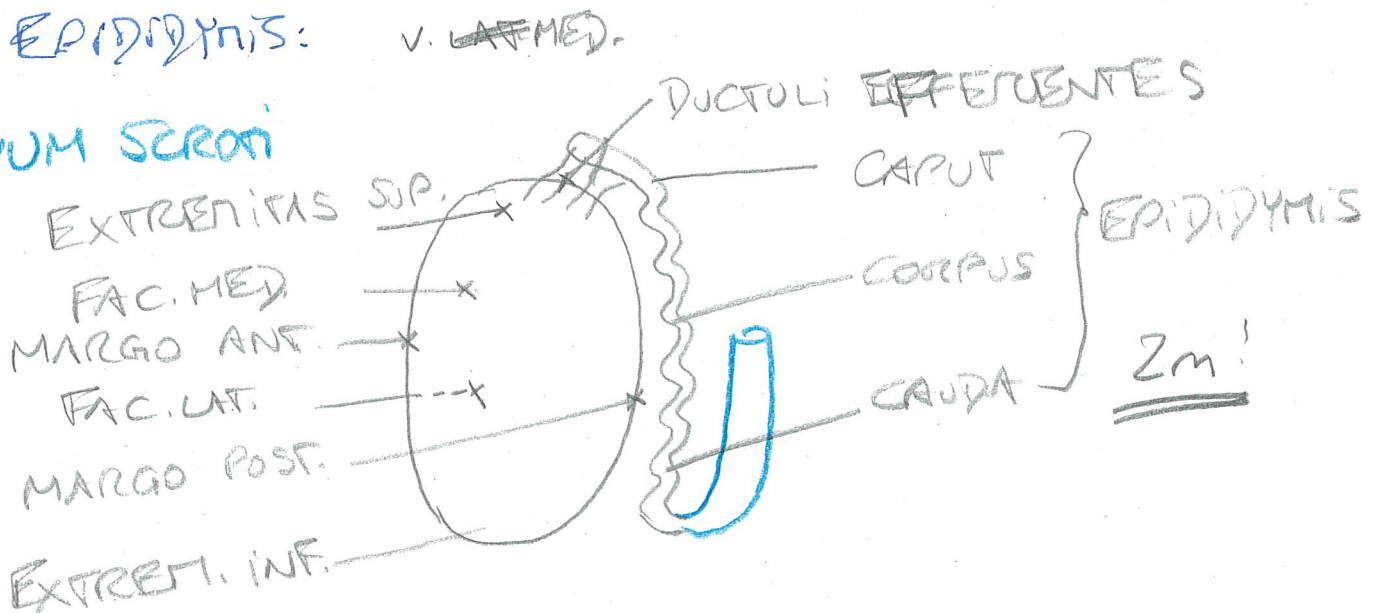


URETHRA MASCHINA:

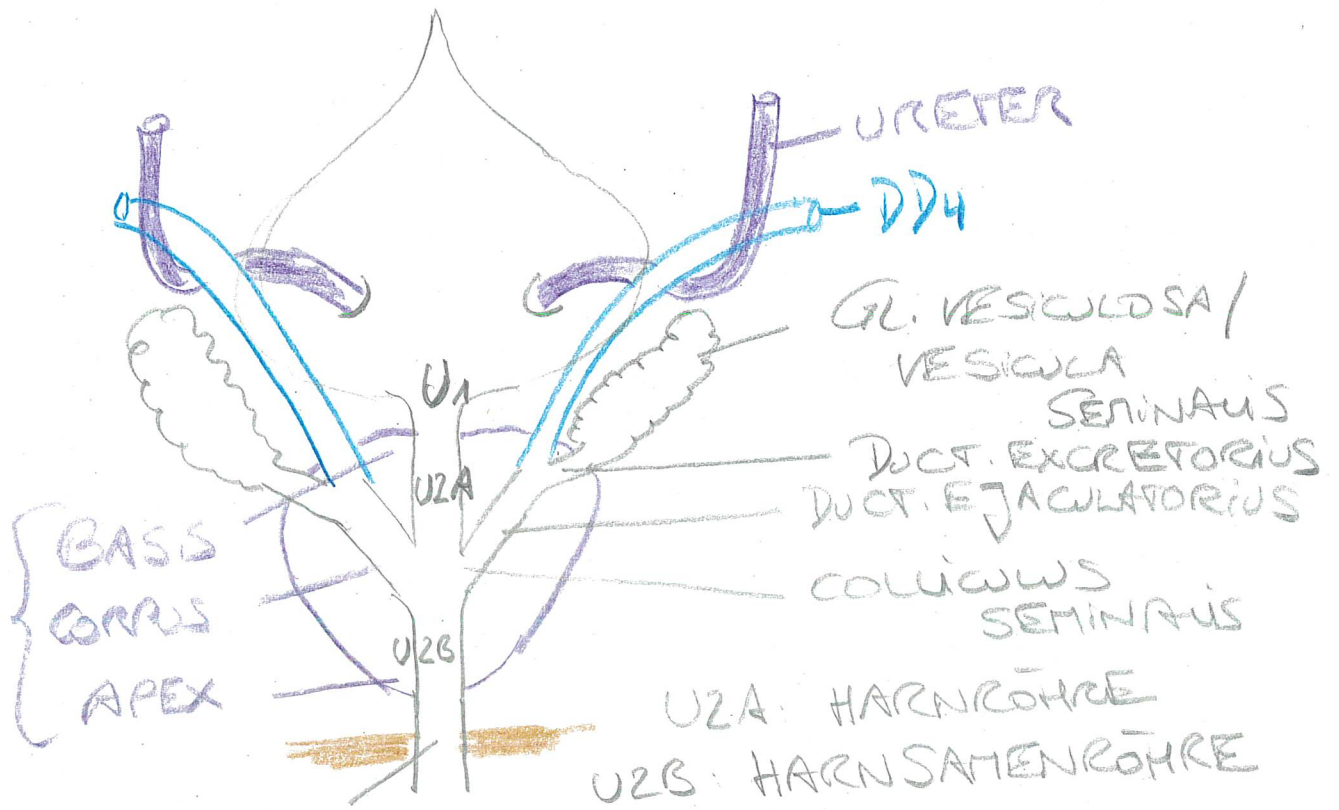
- U<sub>1</sub> ... OSTIUM URETHRAE INT.
- U<sub>2</sub> ... PARS PROSTATICA
- U<sub>3</sub> ... PARS MEMBRANACEA  
= DIAPHRAGMA UROGENITALE
- U<sub>4</sub> ... PARS SPONGIOSA
- U<sub>5</sub> ... FOSSA NAVICULARIS
- U<sub>6</sub> ... OSTIUM URETHRAE EXT.

FUNICULUS SPERMATICUS: Samenstrang.  
 INHALT: DUCTUS DEFERENS [DD<sub>2</sub>]  
 A. DUCT. DEFERENTIS  
 R. GENITALIS N. GENITOFEMORALIS  
 A. TESTICULARIS  
 PLEXUS VENOSUS PAMPINIFORMIS  
 LYMPHGEFÄSSE  
 VEGET. NERVEN

TESTIS + EPIDIDYMIS:  
 CAVUM SCROTUM



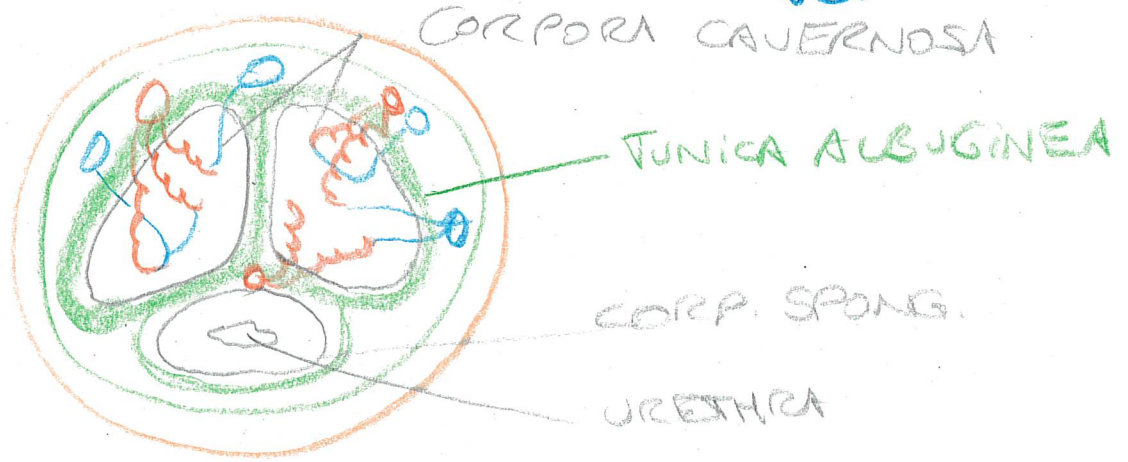
PROSTATA + VESICA URINARIA v. DORSAL



PROSTATA

BN.: A. ILIACA INT.  
PUERUS VENOSUS VESICOPROSTATICUS  
 ↳ V. ILIACA INT.  
 ↓  
 VCI

5



# NERVENSYSTEM

Fkt. \* SOMATISCHE / ANIMALE NERVEN-  
SYST.

↳ MOTORIK  
↳ SENSIBILITÄT

\* AUTONOMES NERVENSYSTEM /

VEGETATIVUM

↳ SYMPATHIKUS  
↳ PARASYMA.

MORPHOLOGISCH:

- ZENTRALES NERVENSYSTEM:

↳ MEDULLA SPINALIS  
↳ ENCEPHALON

- PERIPHERES NERVENSYSTEM.

- ENTERISCHES NERVENSYSTEM. [DARM.]

ZELLEN:

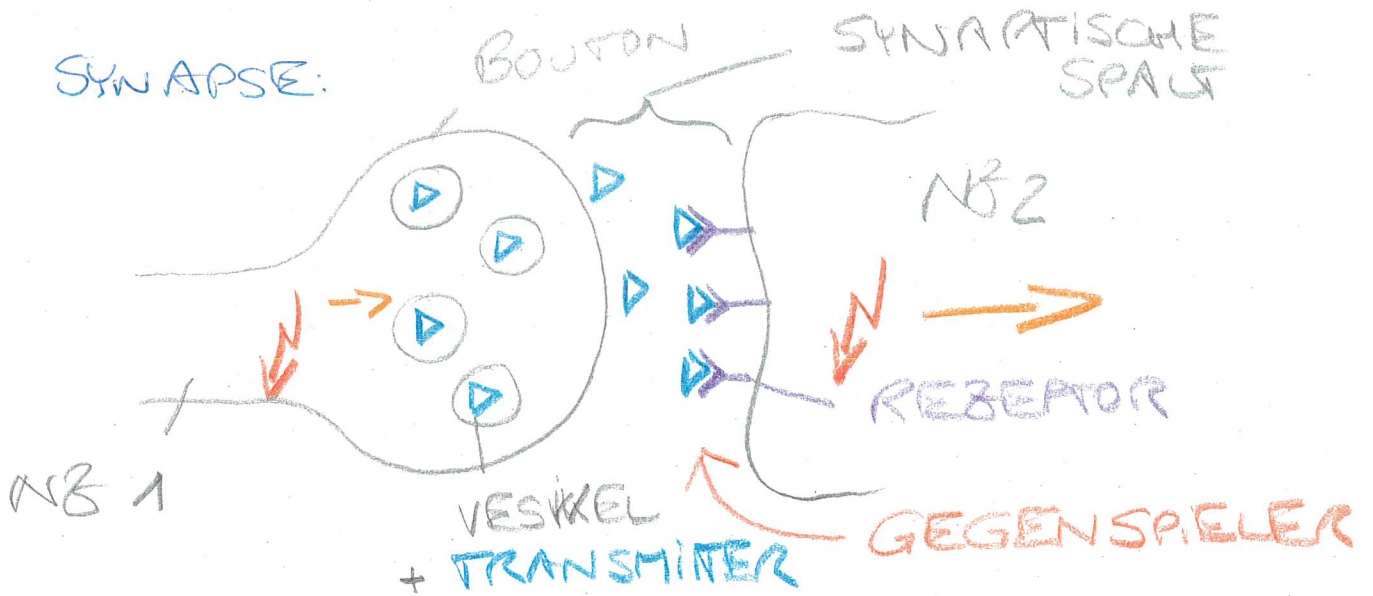
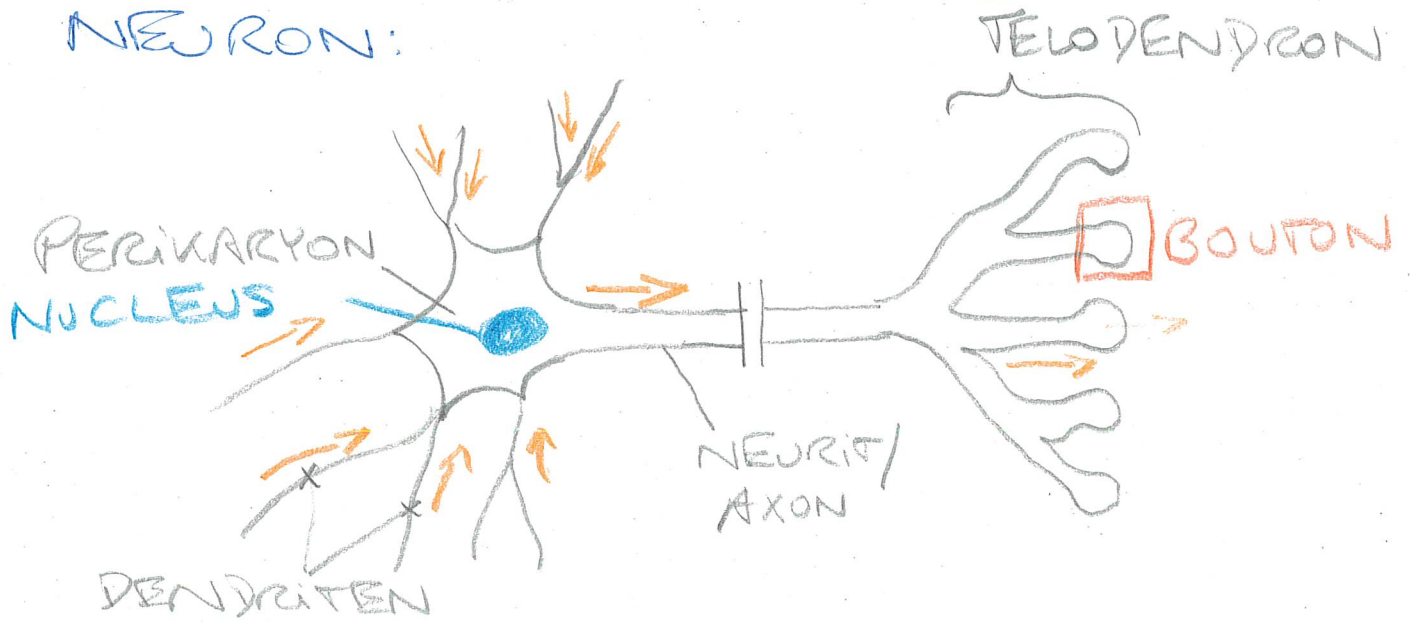
\* NEUROCYT = NERVENZELLE

\* GLIABELLE = STÜTZELLE

↳ BILDET die

BLOT - HIRNSCHRANKE





TRANSMITTER: ADRENALIN,  
ACETYLCHOLIN, ← ATROPIN  
DOPAMIN,  
SEROTONIN,  
GLUTAMAT, uvm

NEURONENKETTE:



MOTORIK: 2

SENSIBILITÄT: BEWUSST: 3  
UNBEWUSST: 2

VEGETATIVUM: 2

SENSORIK: BIS 6?

LEITUNGSBOGEN



A) ERREICHT GROSSHIRNRINDE:  
↳ BEWUSST

B) ERREICHT NICHT GROSSHIRNRINDE:  
↳ UNBEWUSST

→ REFLEXE:

1) MONOSYAPT. REFLEX:  
EIGENREFLEX

$$R = E$$

BSP.: PATELLASEHNENREFLEX

2) POLYSYAPT. REFLEX

$$R \neq E$$

FREMDREFLEX

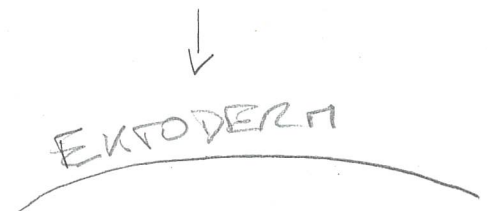
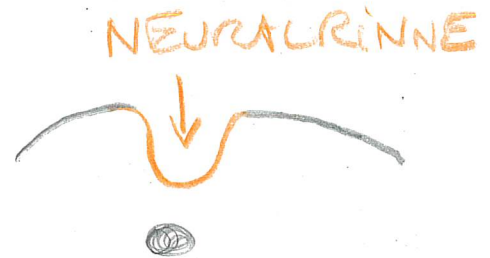
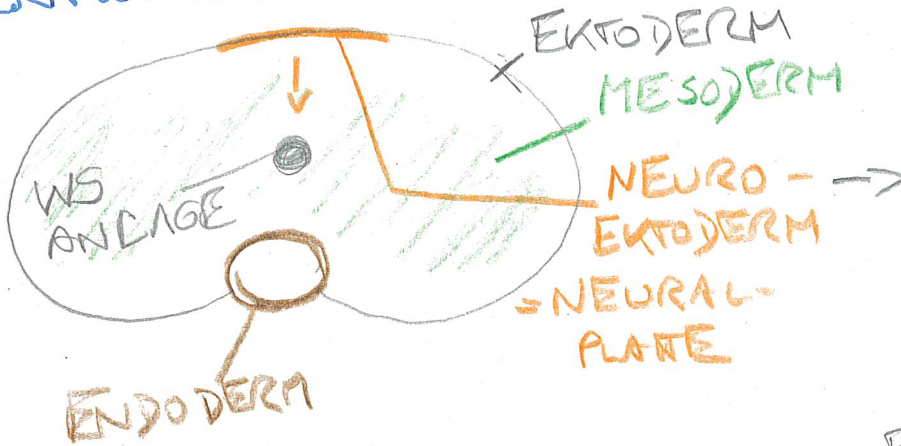
BSP. HERDPLATEN-REFLEX

NEURON	ZNS	PNS
PERIKARYA = SUBST. GRÜSER	CORTEKX RM - GRAU BASALGANGLIEN HIRNNERVENKERNE	GANGLIEN
"FORTSÄTZE" SUBST. ALBA	MARKLAGER BALKEN HIRNBAHNEN RM - WEISS	NERVEN

GLIABEWEN: ZNS: - ASTROCYTEN  
- OLIGODENDROCYTEN  
- EPENDYMBZELLEN  
- MIKROGLIA } BLUT-HIRN-SCHWANKE

PNS: SCHWANN'SCHEN BEWEN

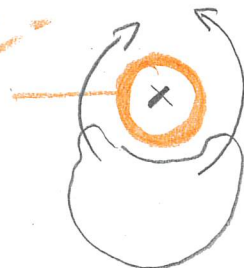
ENTWICKLUNG des ZNS:



NERVENGEW.

X HOHLRAUMSYSTEM  
= INNERE  
LIQUORSYSTEM

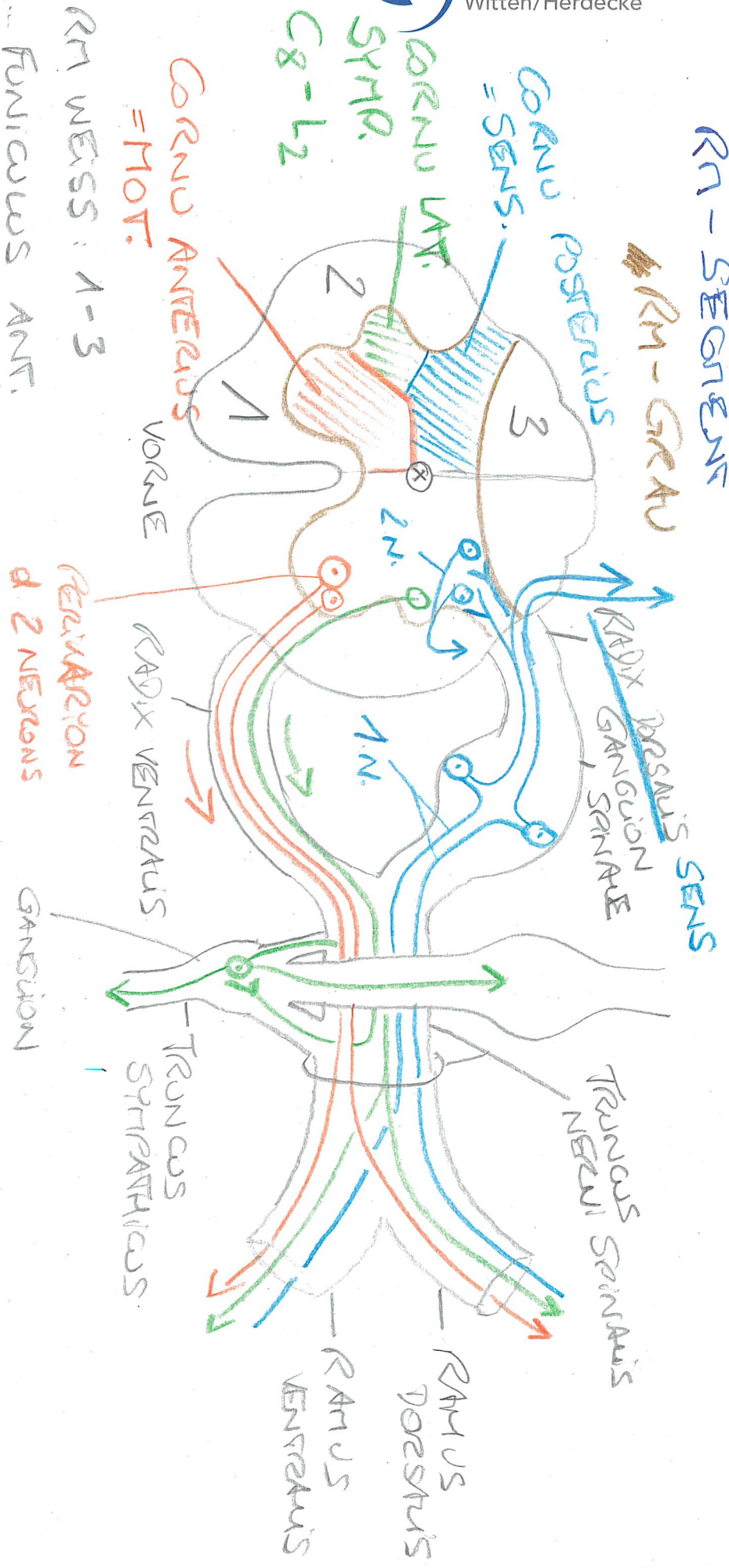
NEURAL-ROHR





RN - SEGMENT

RN - GREAU



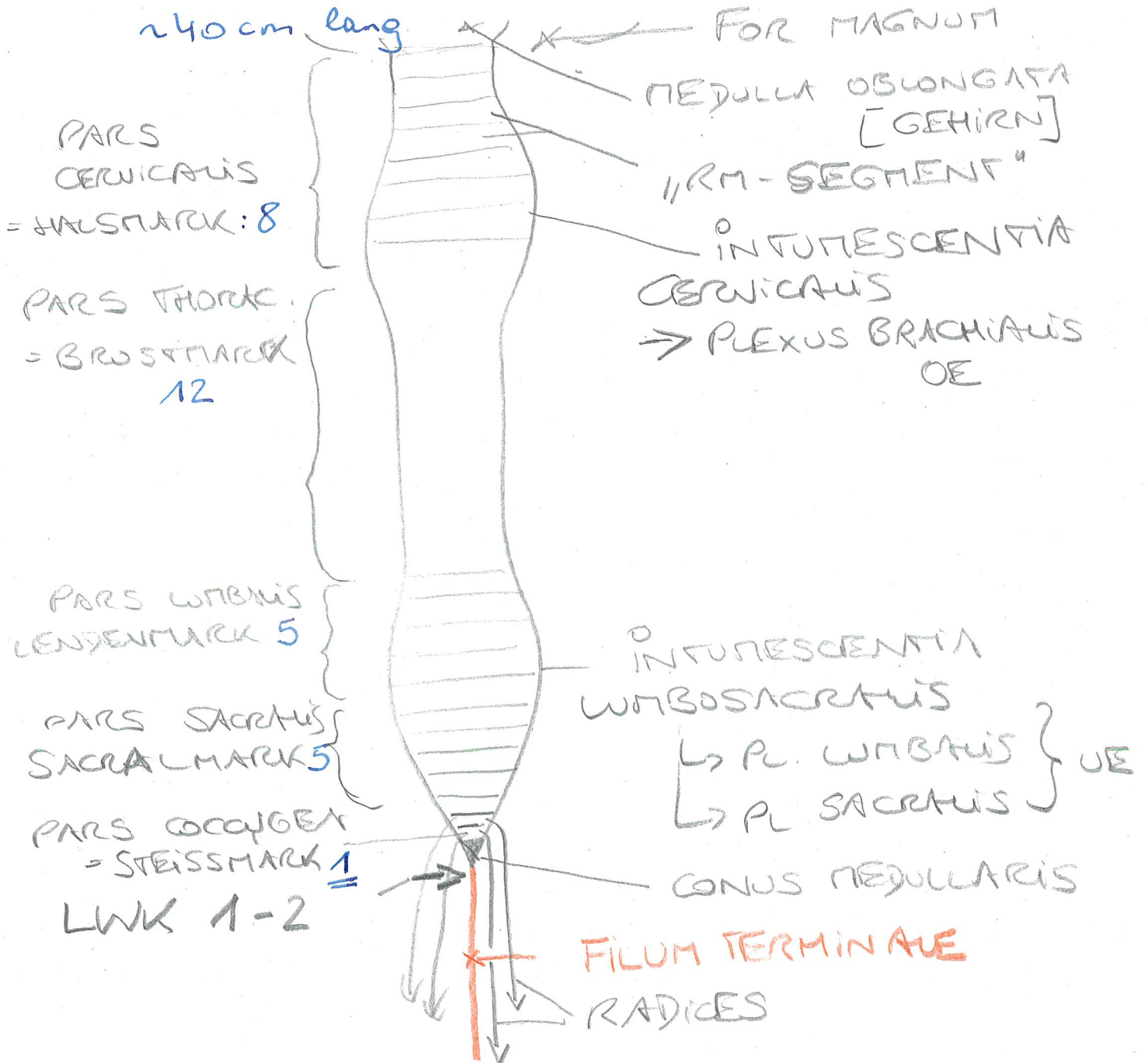
RN WESS: 1-3

1. Funiculus ANT.
  2. Funiculus LAT.
  3. Funiculus POST.
- RN - BAHNEN

TRUNCUS NERVII SPINALIS  
= NERVUS SPINALIS

→ FOR INTERVERTEBRAL

# MEDULLA SPINALIS:



REGEL:

JEDES RM-SEGMENT TRIT UNTER  
DEN ZUGEHÖRIGEN WIRBEL AUS

RM-SEGMENT  $\rightarrow$  FOR. INTERVERT. TH<sub>3/4</sub>  
TH<sub>3</sub>

RM-SEG. L<sub>4</sub>  $\rightarrow$  FOR. INTERVERT. L<sub>4</sub> / L<sub>5</sub>

AUSNAHME: HALSMARK: OBERHALB d. WIRBELS

RM-SEG. C<sub>1</sub>  $\rightarrow$  zw. OS OCCIPITALE + ATLAS

RM-SEG. C<sub>5</sub>  $\rightarrow$  FOR. INTERVERT. C<sub>4</sub> / C<sub>5</sub>

---

RM-S C<sub>7</sub>  $\rightarrow$  FOR. IV C<sub>6</sub> / C<sub>7</sub>

RM-S C<sub>8</sub>  $\rightarrow$  FOR. IV. C<sub>7</sub> / TH<sub>1</sub>

RM-S TH<sub>1</sub>  $\rightarrow$  FOR. IV TH<sub>1</sub> / TH<sub>2</sub>

EUROPA: 8 HALSSEG. : C<sub>1</sub> - C<sub>8</sub>

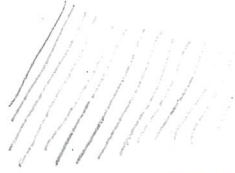
ANGLOAMERIK: C<sub>0</sub> - C<sub>7</sub>



# RM - HÄUTE und -RÄUME [HIRN]

ZNS

PIA MATER → 1



SPATIUM SUBARACHNOIDEALE  
= ÄUSSERE LIQUORRAUM

GR. ARTERIEN + VENEN } ZNS

LIQUOR CEREBROSPINALIS

ARACHNOIDEA → 1



SPATIUM SUBDURALE → VENEN

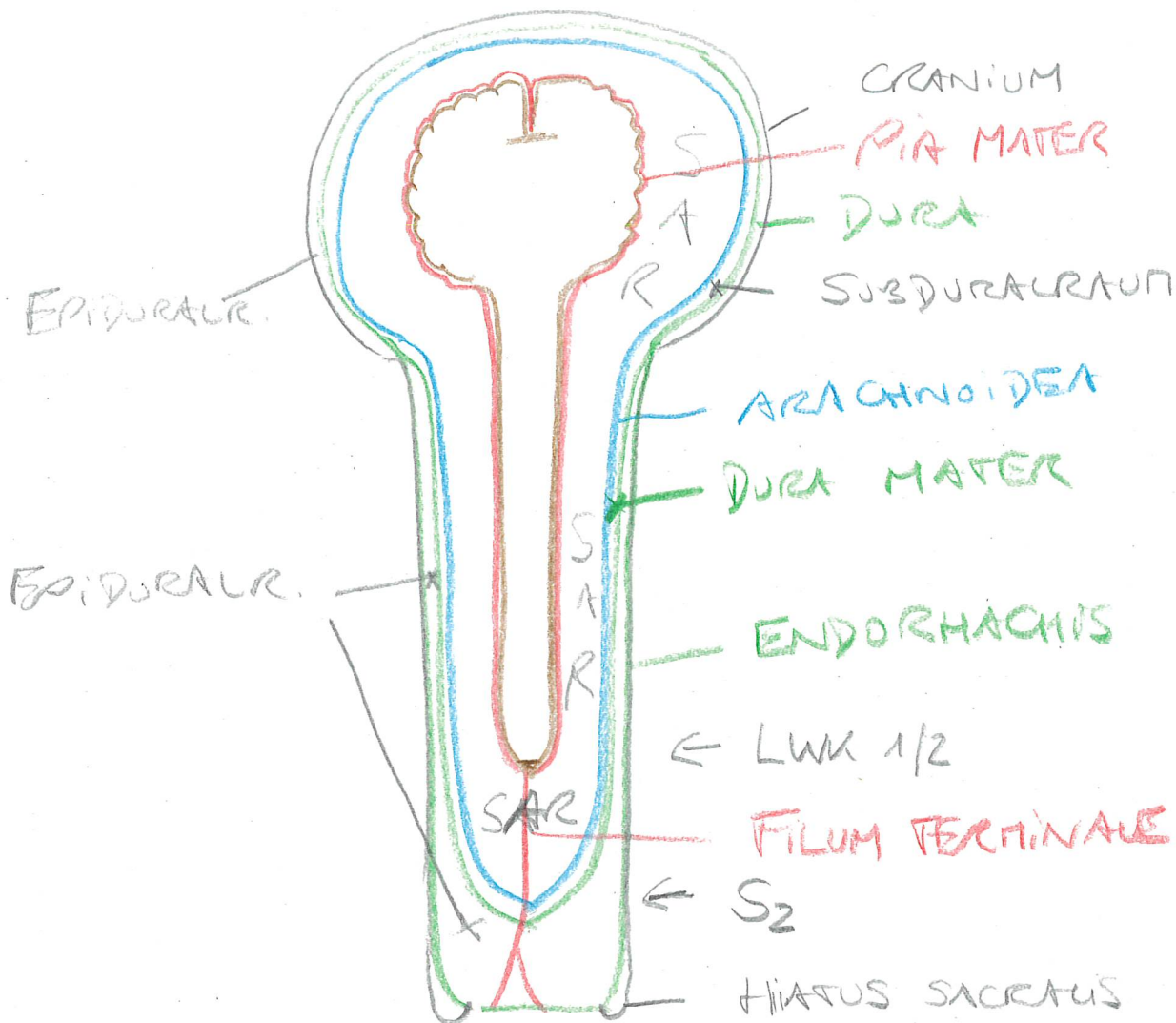
DURA MATER

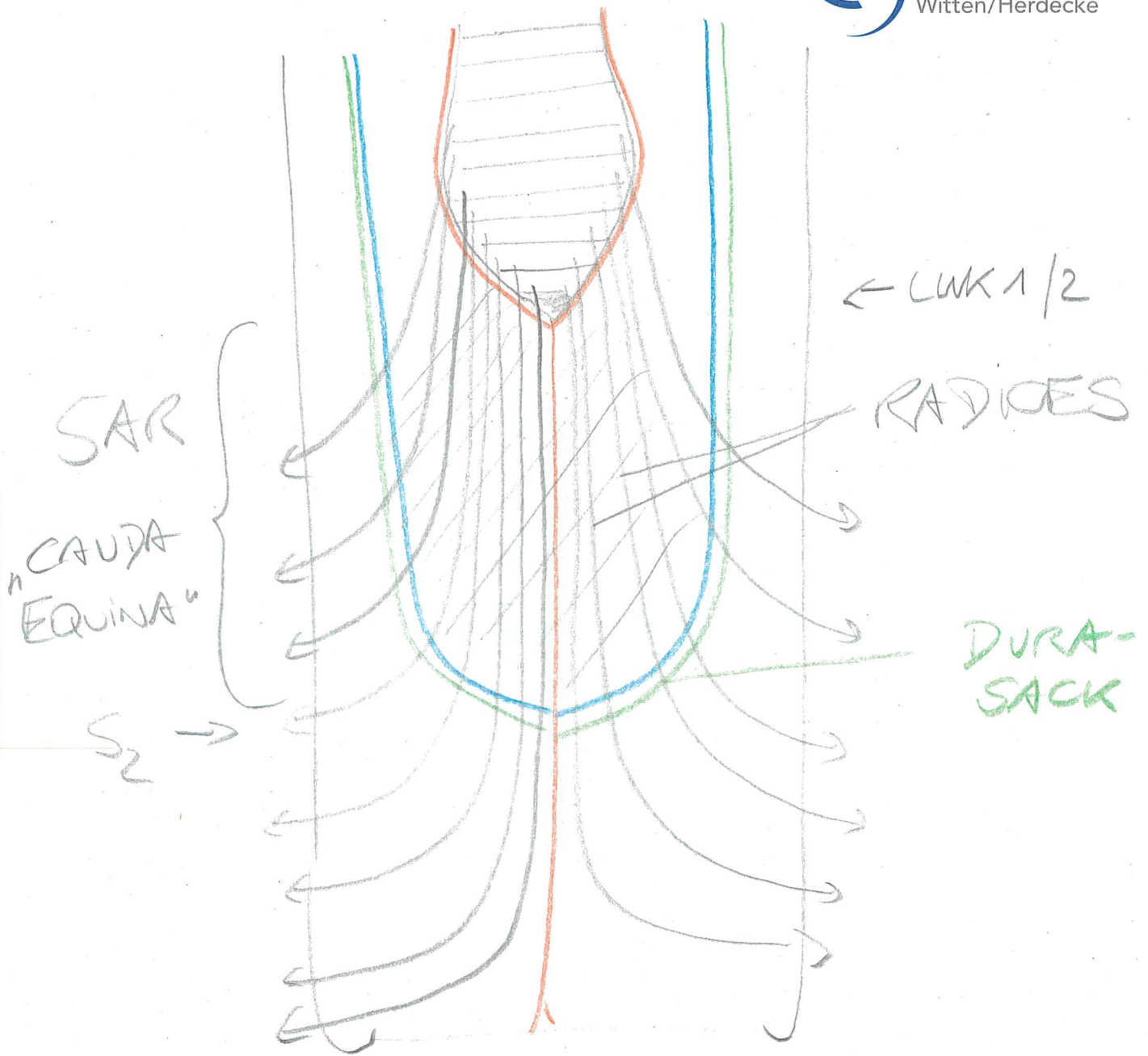


SPATIUM EPIDURALE → VENEN / VENEN-GEFLECHTE  
= PERIDURALE → HIRNHAUTARTERIEN

ENDORHACHIS [WIRBELKANAL]

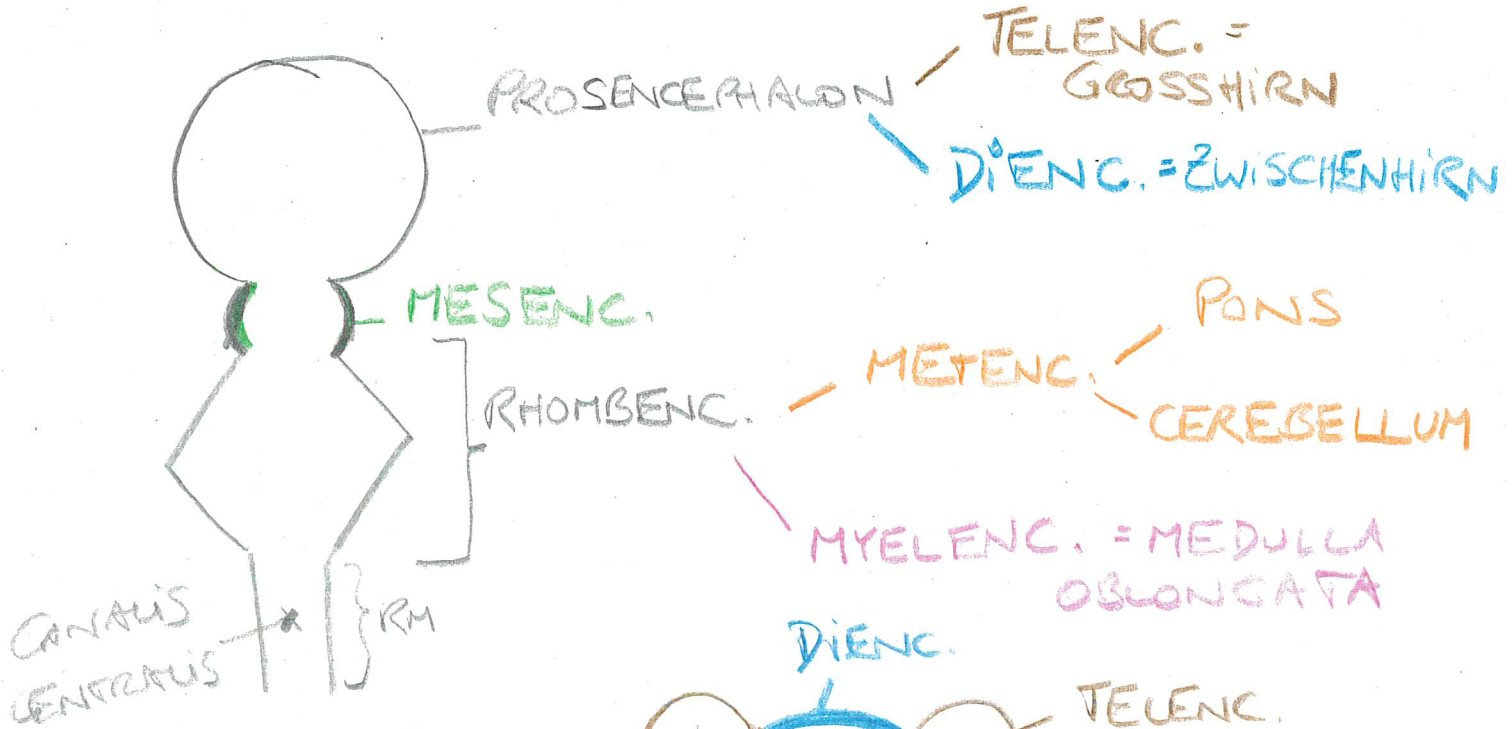
UNOCHEN [im SCHÄDEL]





# GEHIRN = ENCEPHALON

## HIRNBÜSCHEN



2 HEMISPHERÄN

INNERES LIQUORSYST.  
 = VENTRIKELSYSTEM  
 [GEHIRN] + CANALIS CENTR. [RM]

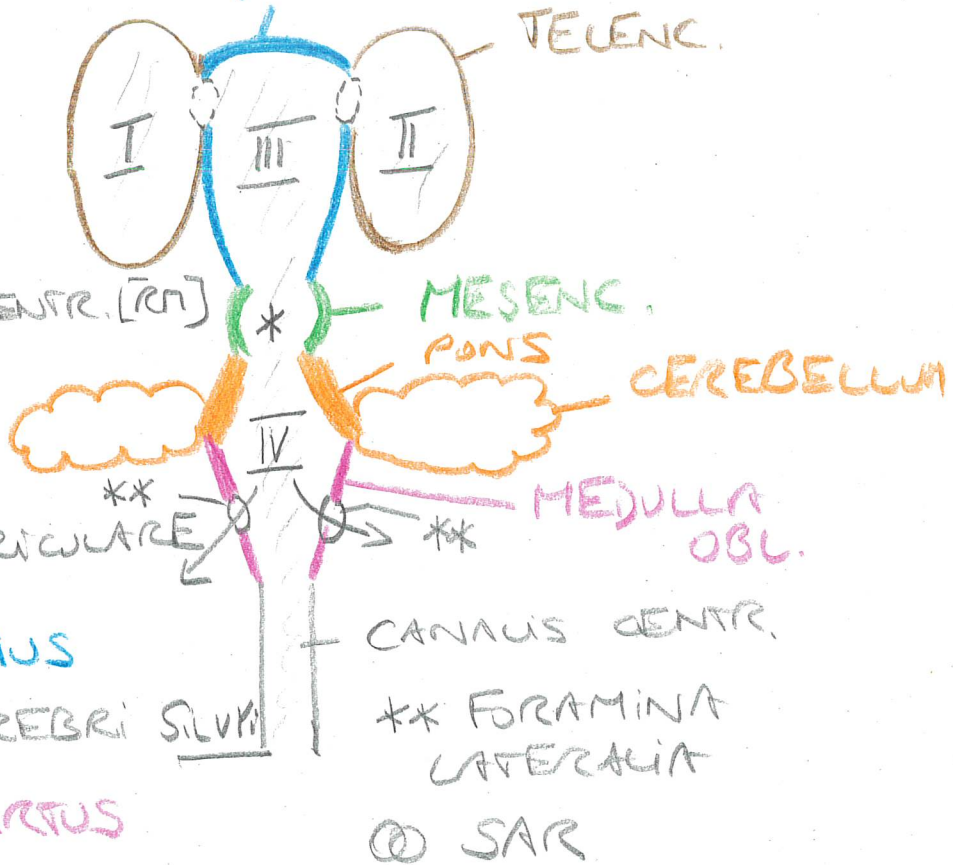
I+II VENTRICULI LATERALES

( ) FOR. INTER VENTRICULARE MONROI

III VENTRICULUS TERTIUS

\* AQUAEDUCTUS CEREBRI SILVII

IV VENTRICULUS QUARTUS

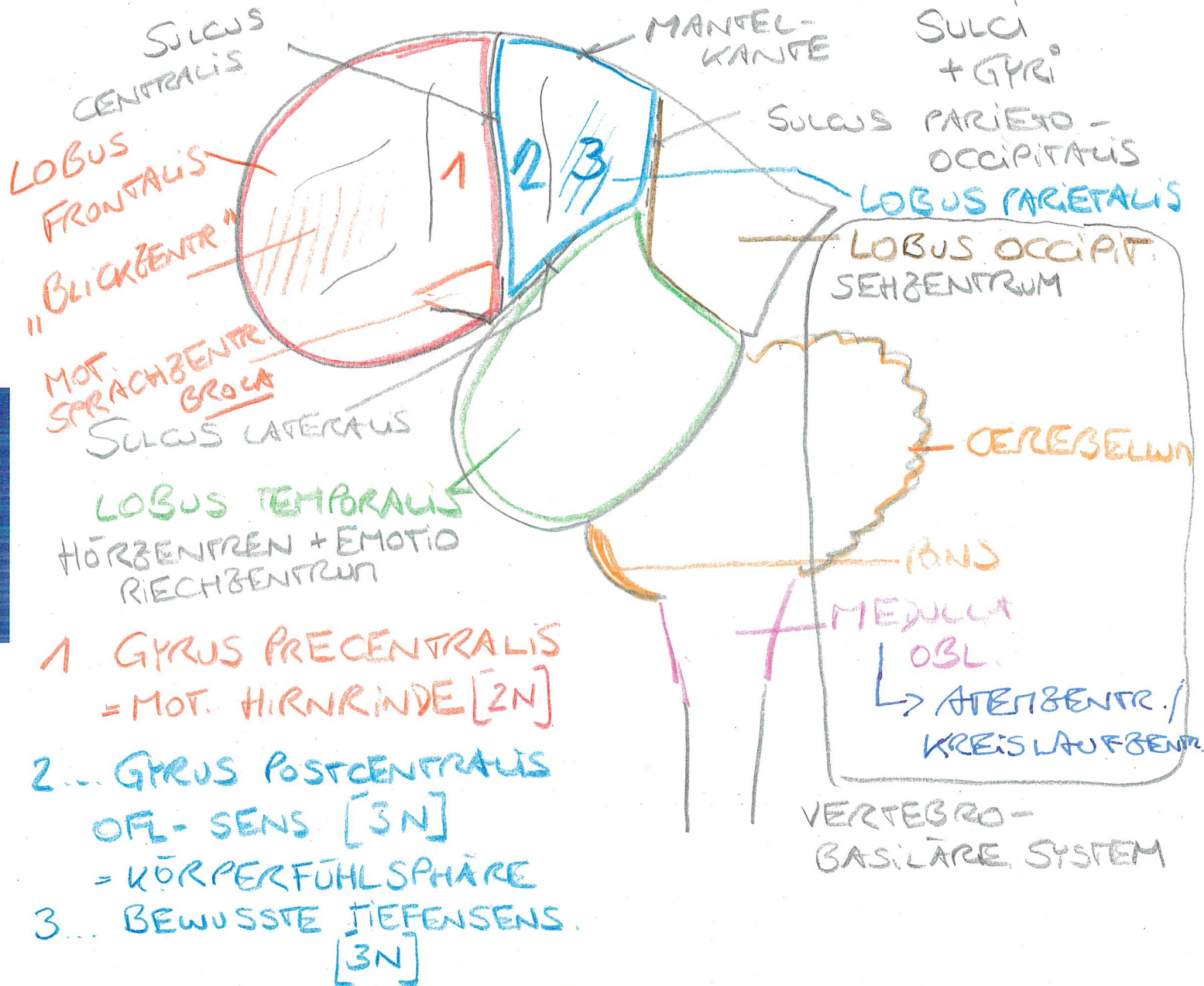


„HYDROCEPHALUS“



GROSSHIRN v. LAT.:

LI. HEMISPHERE



CEREBELLUM: GLEICHGEWICHT

- UNBEWUSSTE TIEFENSENS.

- @ GROSSHIRN

A. CAR. INT. = CAROTISSYSTEM

# VENTRIKELSYSTEM:

