

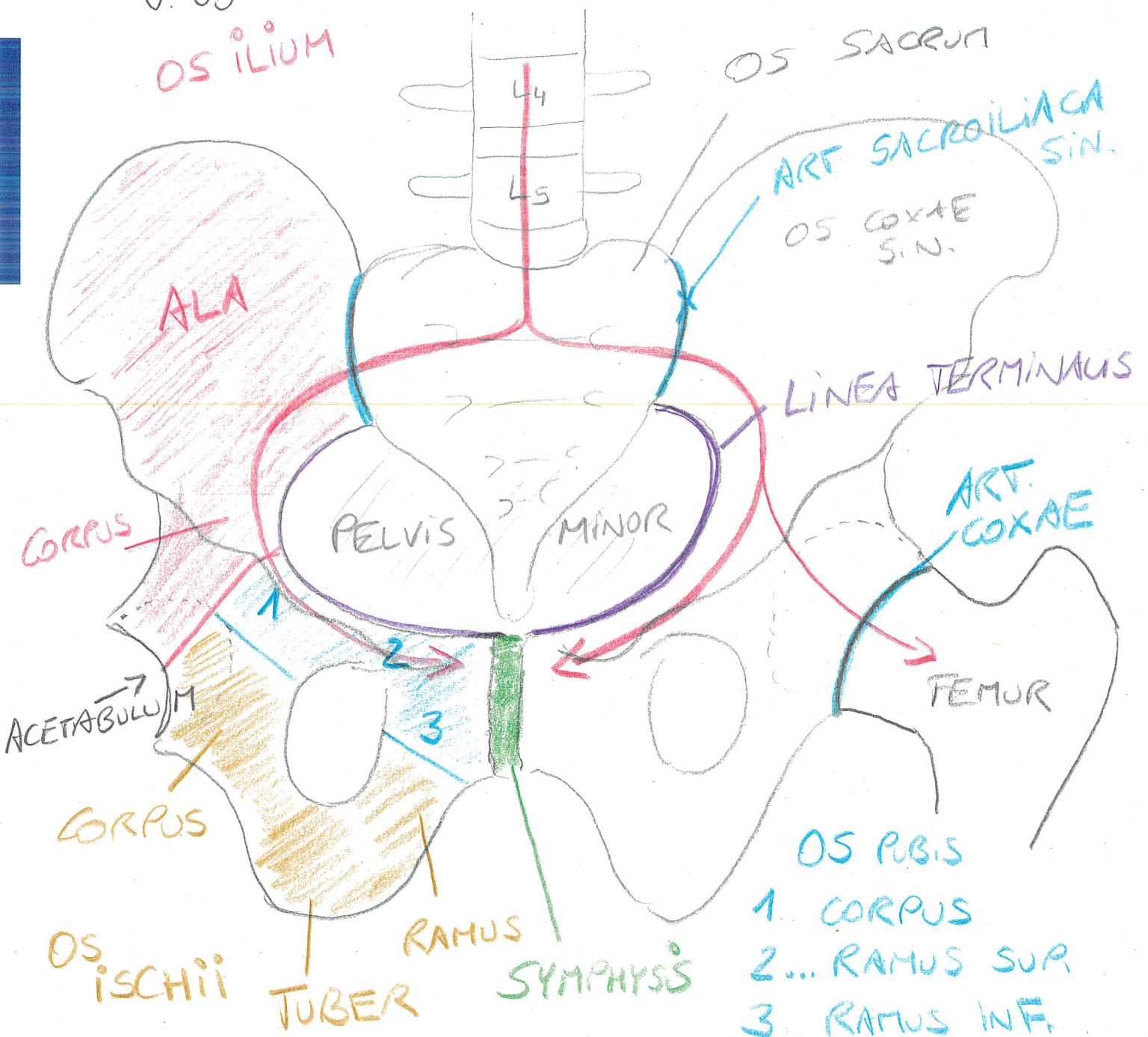
# CINGULUM PELVIS

- OS SACRUM
- OSSA COXAE DEXTRUM et SINISTRUM

GELLENKE: ART. SACROILIACA DEXT. + SIN.  
SYMPHYSIS PUBICA

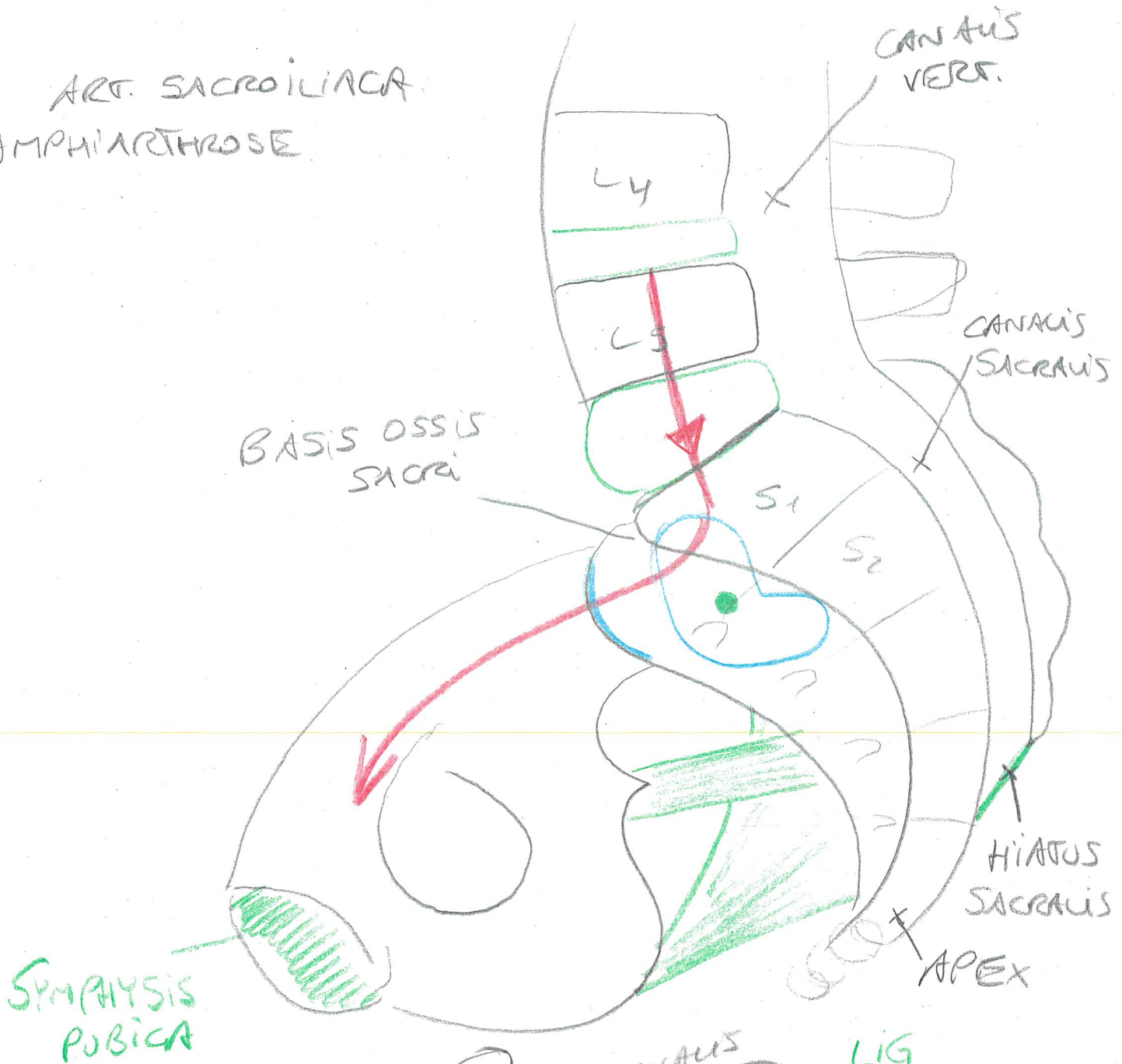
V. VO

OS ILIUM

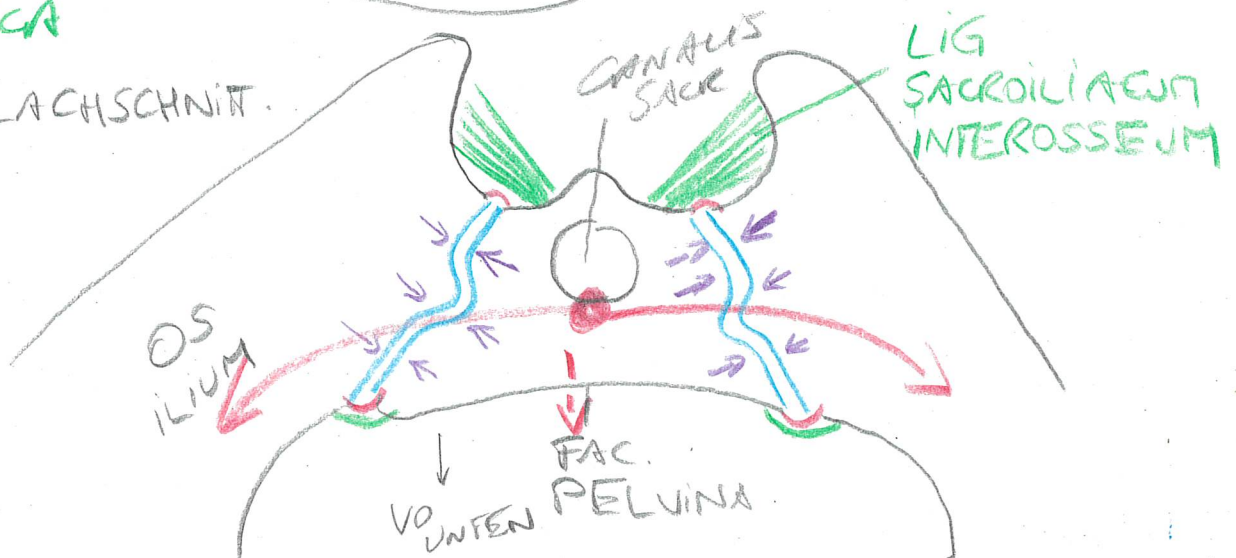


MEDIAN - SAGITTAL - SCHNITT

ART. SACROILIACA  
AMPHIARTHROSE



FLACHSCHNITT

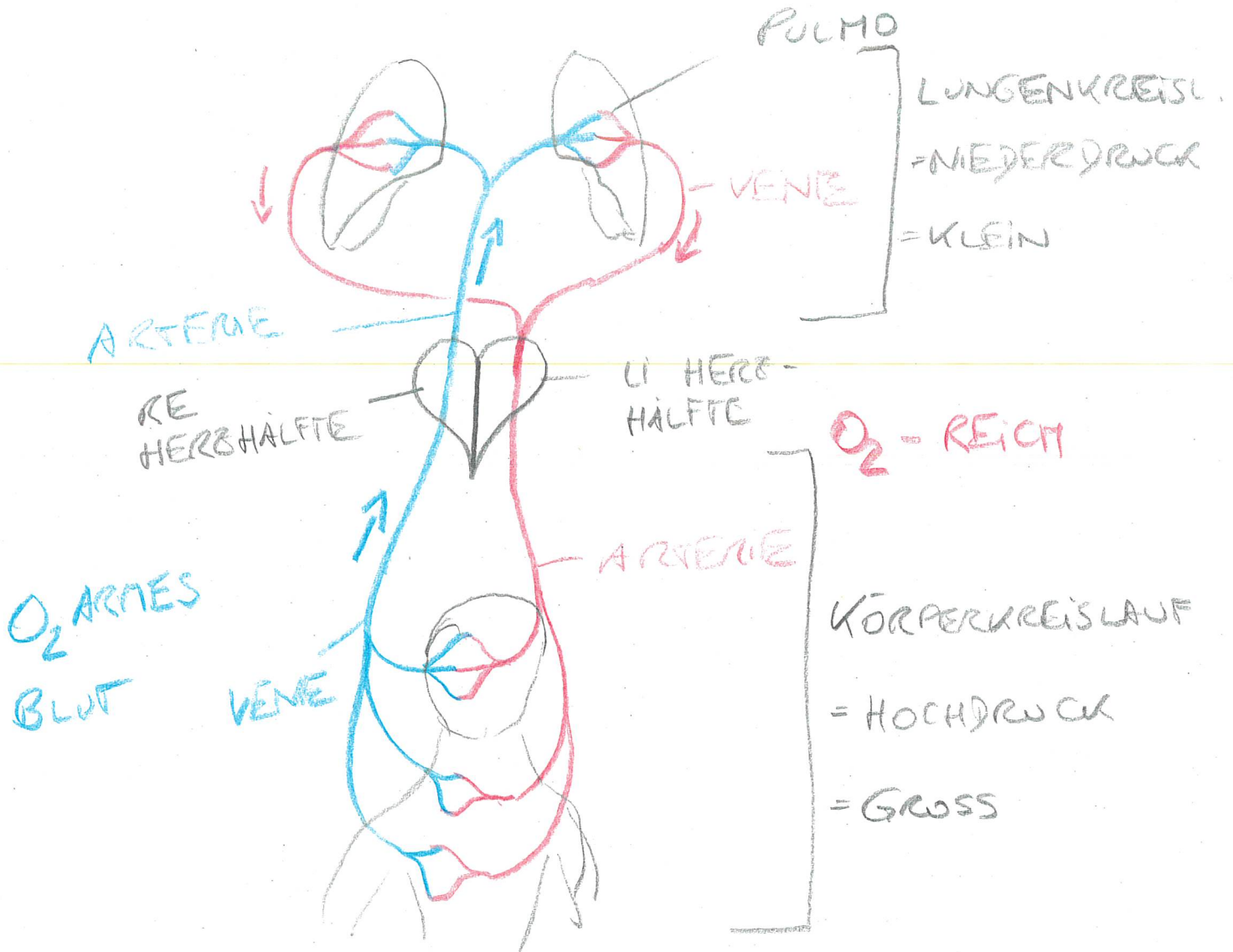


# HERZ - KREISLAUFSYSTEM

I) COR

II) GEFÄSSSYSTEM

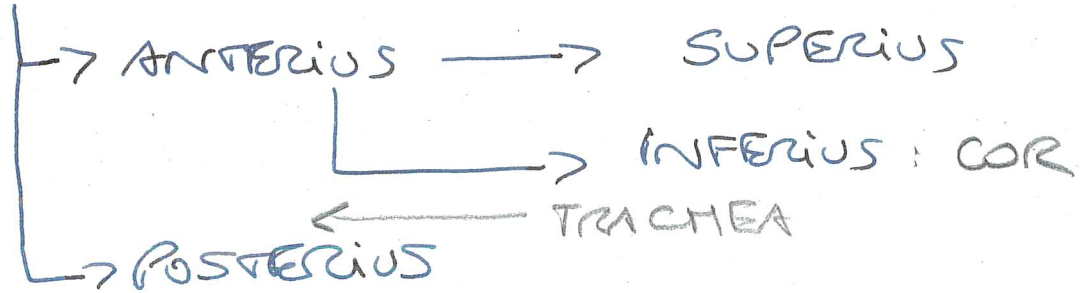
- A) ARTERIEN 20%
- B) VENEN 80%
- C) LYMPHGEFÄSSE



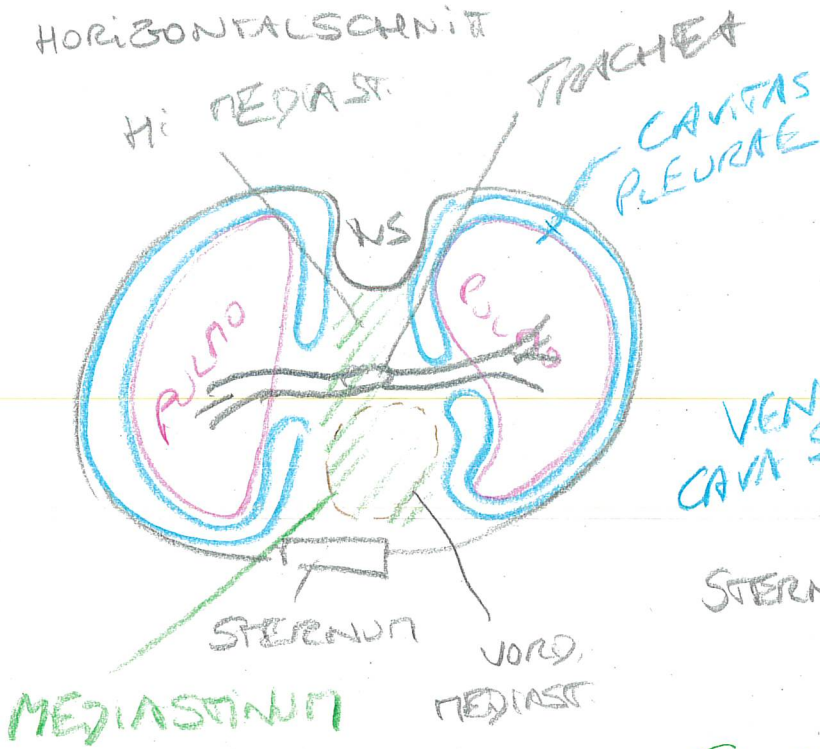
ad I) COR

- VORDEREN UNTEREN MEDIASTINUM
- CAVITAS PERICARDII

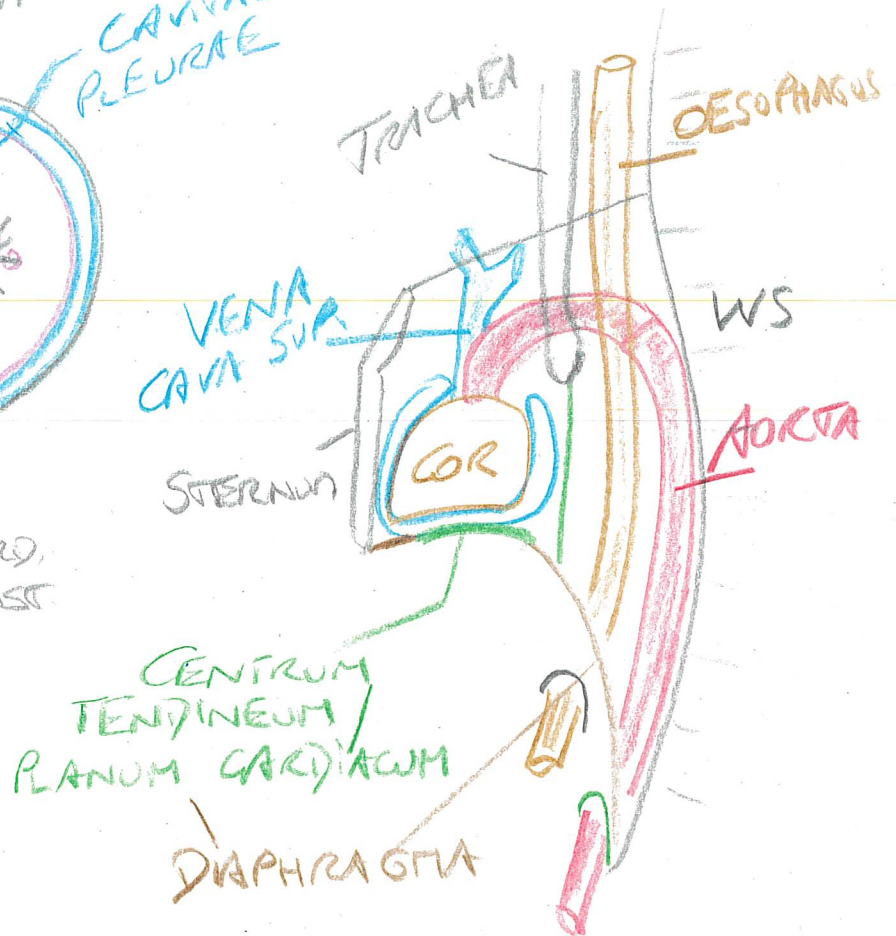
MEDIASTINUM: MITTELFELLRAUM



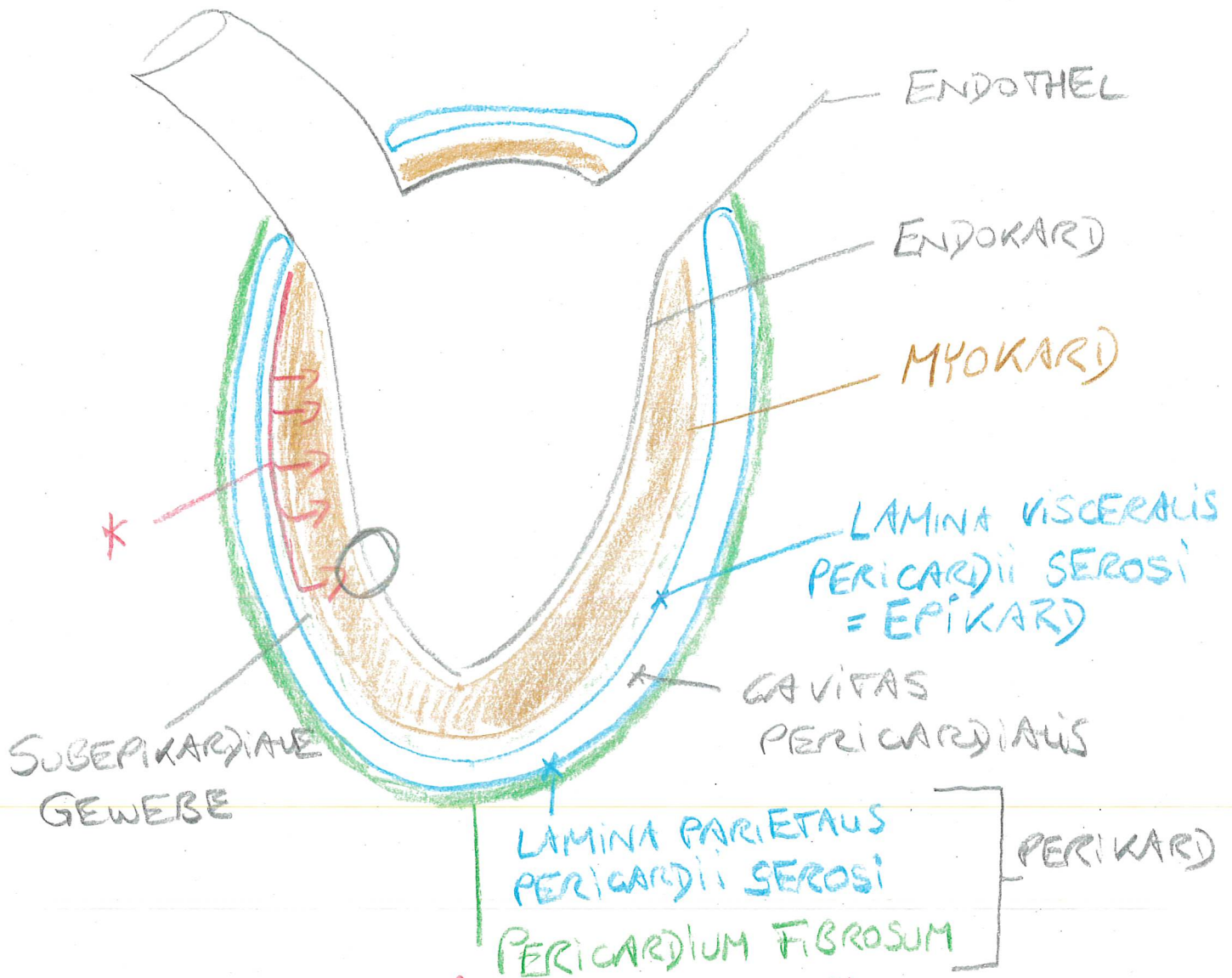
HORIZONTALSCHNITT



SAGITALSCHN.



# HERZWANNSCHICHTEN

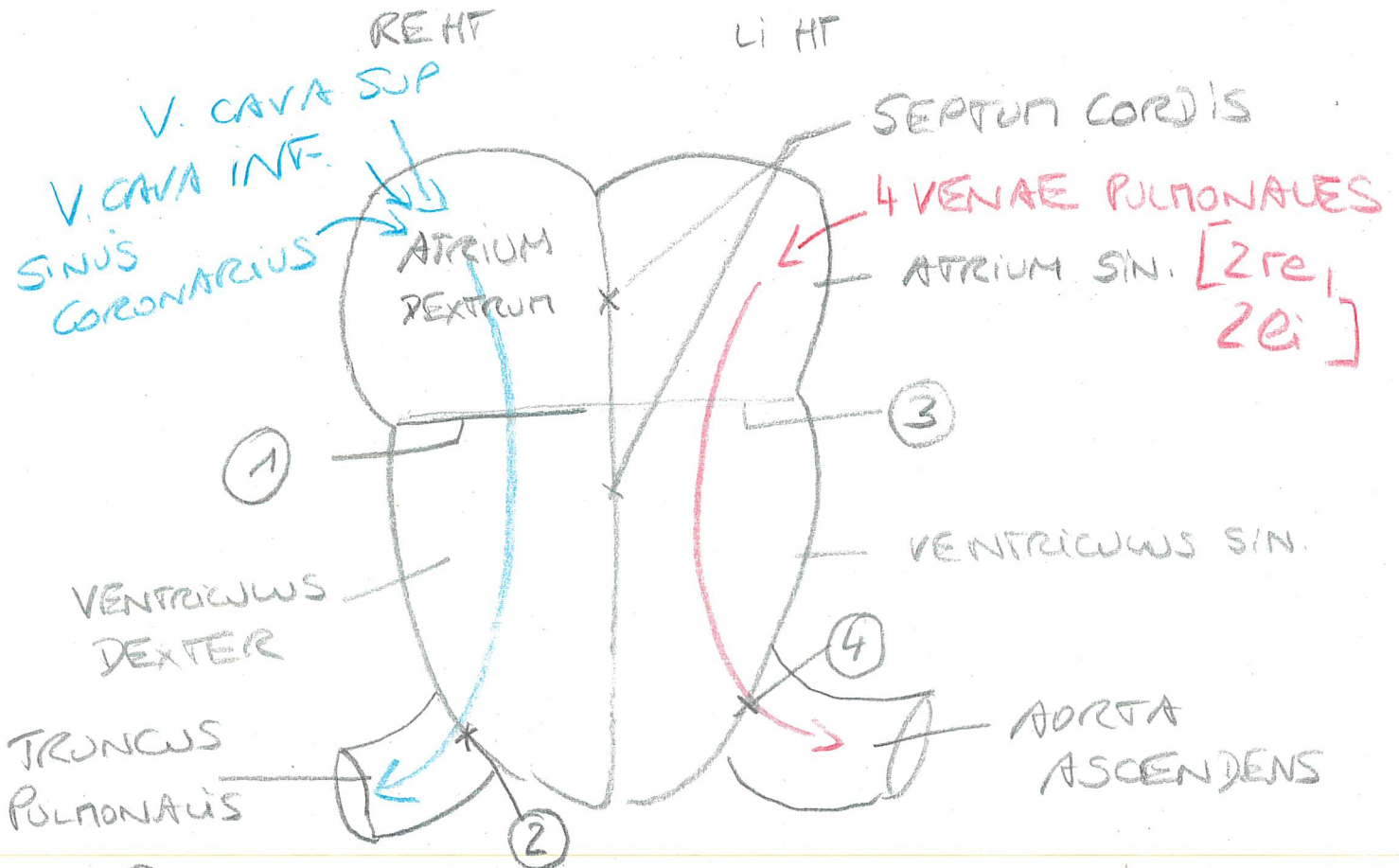


\* AA. CORONARIAE DEXT. + SIN

→ VENAE CORDIS → SINUS CORONARIUS

↓  
ATRIUM DEXTRUM

# 4 - RÄUME - SCHNITT



① OSTIUM ATRIOVENTRICULARE DEXTRUM  
VALVA ATRIOVENTRICULARIS DEXTRA  
= VALVA TRICUSPIDALIS

② OSTIUM TRUNCI PULMONALIS  
VALVA TRUNCI PULMONALIS

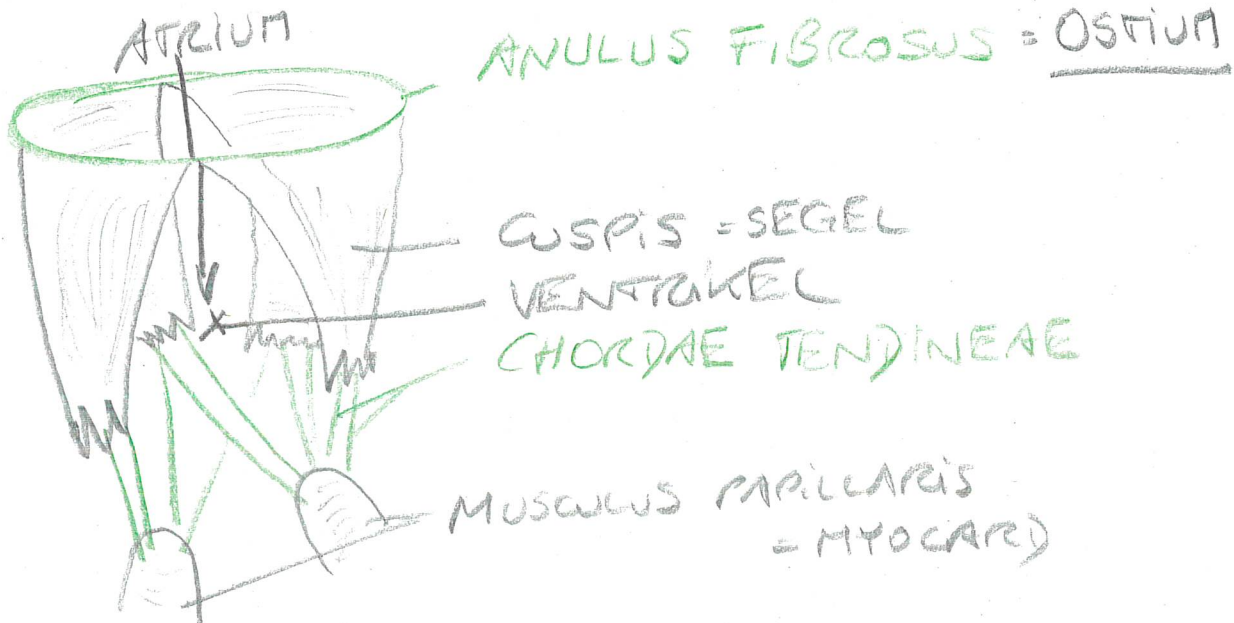
③ OSTIUM ATRIOVENTR. SIN.  
VALVA ATRIOVENTR. SIN.  
= VALVA BICUSPIDALIS = MITRALIS

④ OSTIUM AORTAE  
VALVA AORTAE

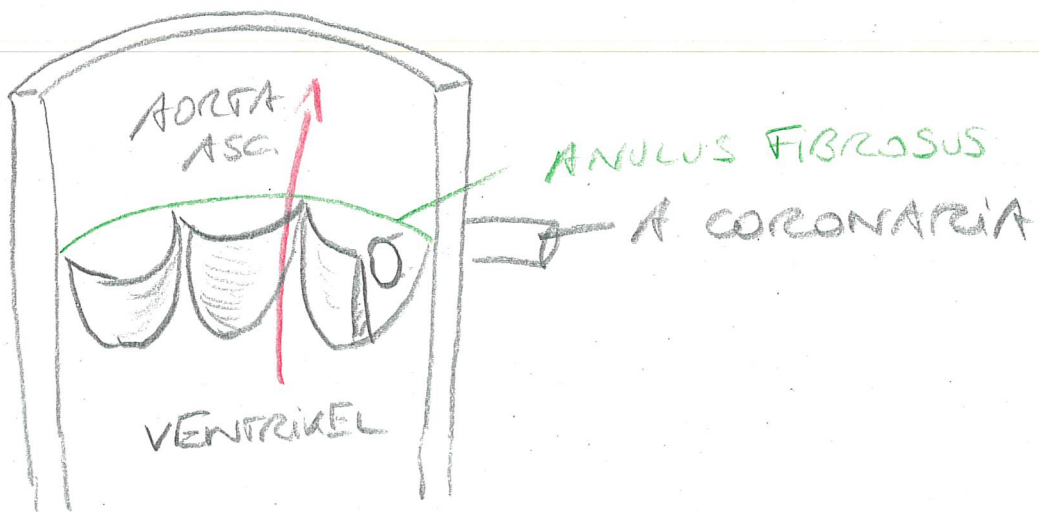
## HERZKLAPPEN:

- SEGELKLAPPEN: (1) + (3)
- TASCHENKLAPPEN: (2) + (4); VENENKLAPPEN

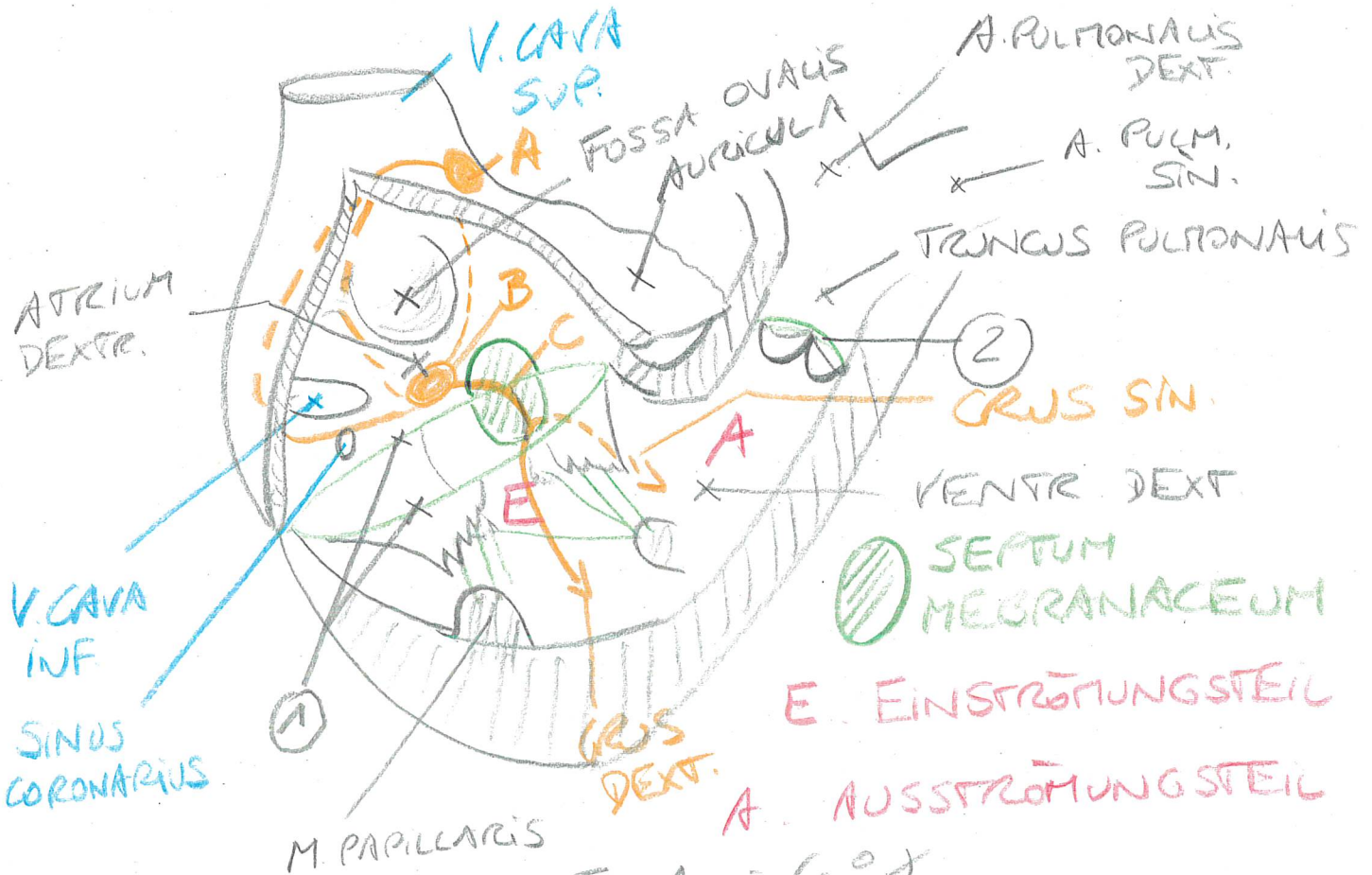
## SEGELKLAPPE:



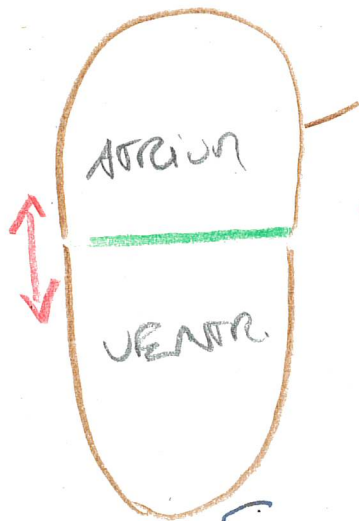
## TASCHENKLAPPE



RE HERZTEIL



RE: E:A = 60°  
 LI: E:A = 15°



MYOKARDIUM

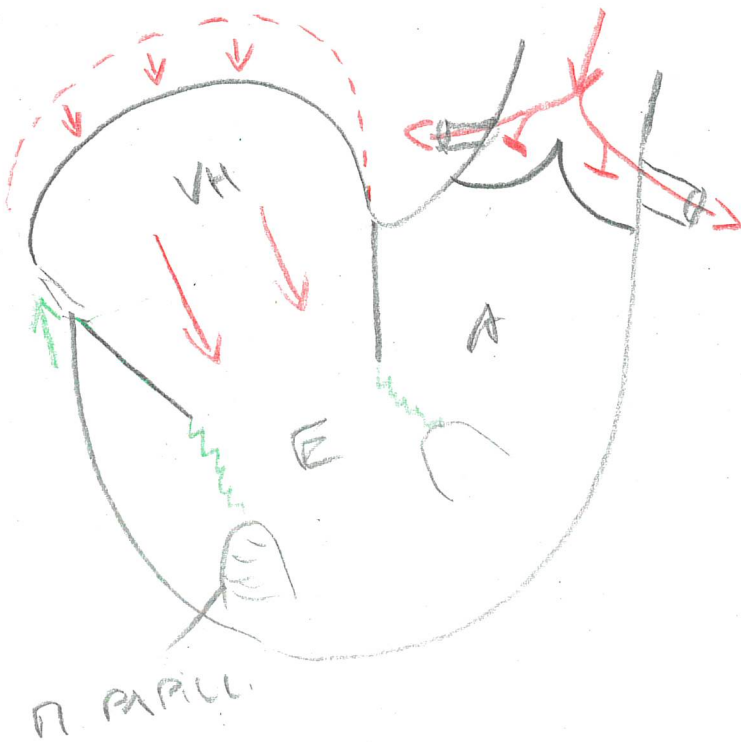
VENTILESENE = HERZ-SKELETT

DIASTOLE - SYSTOLE  
 ANSAUGEN - AUSWERFEN

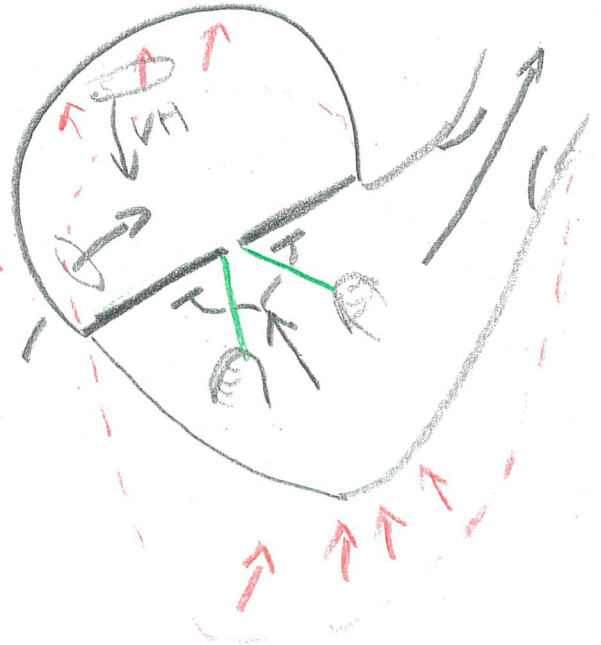
gcz. { VORHOFDIASTOLE: RE + LI  
 KAMMER SYSTOLE: RE + LI



# VORHOFSTROKE



# KAMMERSTROKE



120 / 80 mm Hg  
Syst. Diast.  
KAMMER

KÖRPERKREISLAUF

AORTA: ELASTISCHER TYP

↳ WINDKESSELFUNKTION

# REIZLEITUNGSSYSTEM

↓ VEGETATIVUM → SYMPATHIKUS: ↑  
 ↓ PARASYMPATHIKUS: ↓

A NODUS SINUATRIALIS = SINUSKNOTEN  
 KEITH/FUCK SINUSRHYTHMUS  
 60 - 80/min.

→ RE+LI VH: FASCICULUS INTERATRIALIS

FASCICULI INTERNODALES

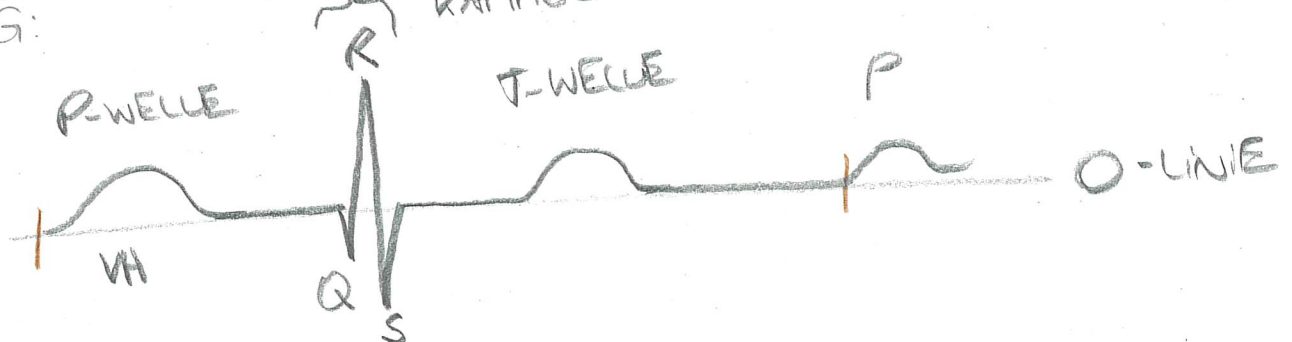
B NODUS ATRIOVENTRICULARIS = AV-KNOTEN  
 [in re VH]

C TRUNCUS ATRIOVENTRICULARIS = HIS-BÜNDEL  
 (FASCICULUS) → IM SEPTUM MEMBRANACEUM

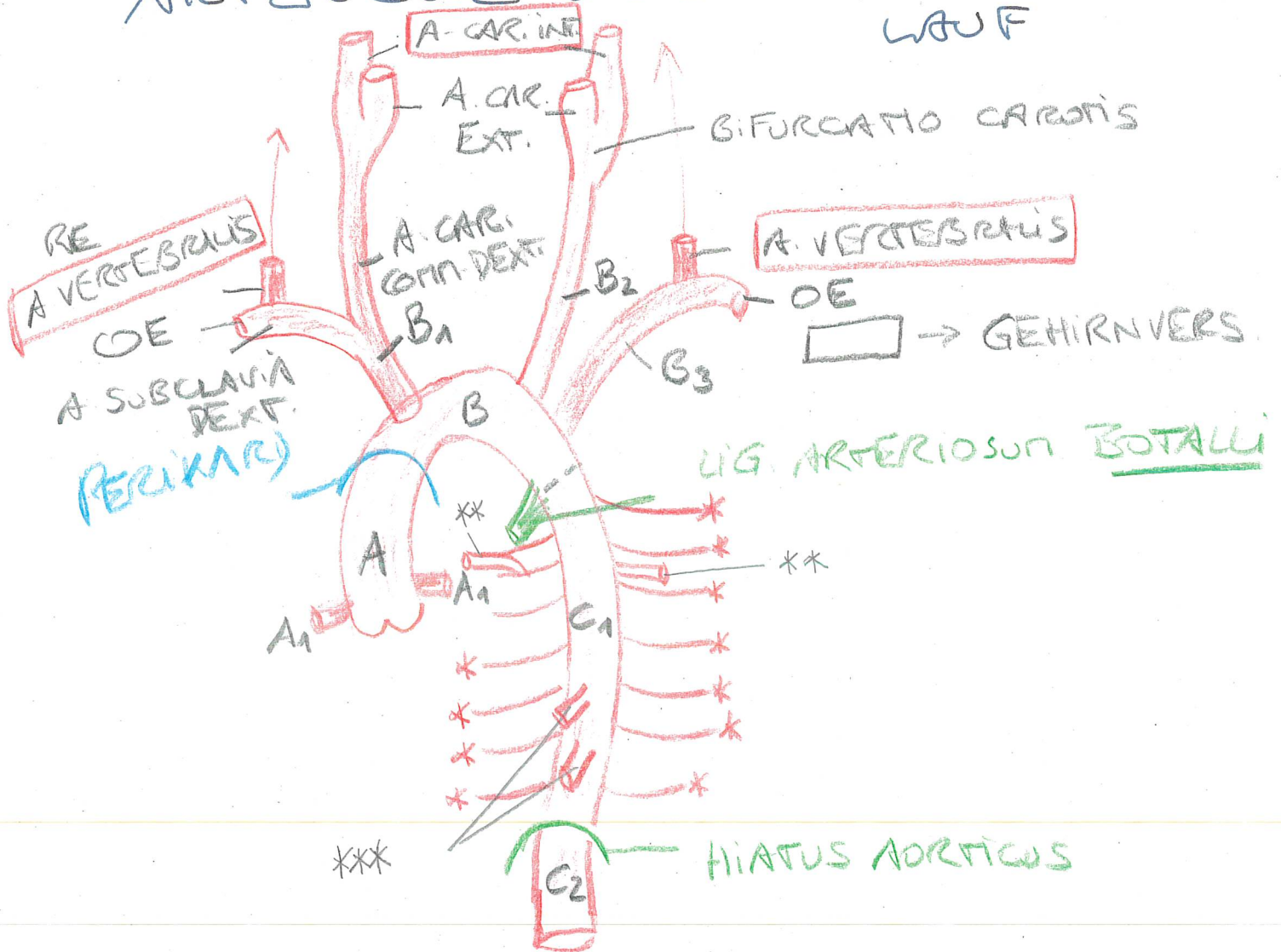
→ CRUS DEXTR. re Kammer →  
 → CRUS SIN. li Kammer →  
 ] PURPURINJE FASERN

HERBSCHLAG:  $Na^+ + Ca^{2+} \rightarrow$  HINEIN  
 $K^+ \rightarrow$  RAUS

EKG: QRS-KOMPLEX KAMMER



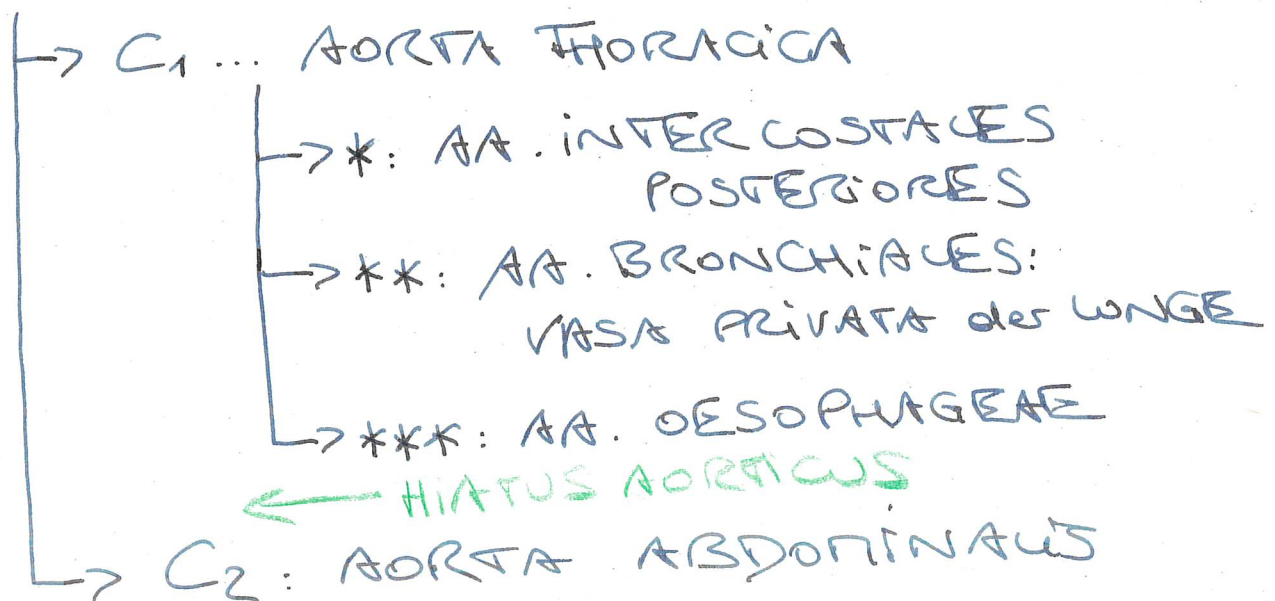
# ARTERIELLE SYSTEM: KÖRPERKREISLAUF



A... AORTA ASCENDENS  
 ↳ AA. CORONARIÆ DEXT. + SIN.  
 A<sub>1</sub>

B... ARCUS AORTAE  
 ↳ B<sub>1</sub>... TRUNCUS BRACHIOCEPHALICUS [RE]  
 ↳ B<sub>2</sub>... A. CAROTIS COMMUNIS SIN.  
 ↳ B<sub>3</sub>... A. SUBCLAVIA SIN.

## C... AORTA DESCENDENS



## AORTA ABDOMINALIS

### UNPAARE ÄSTE:

#### I) TRUNCUS COELIACUS

- IA: A. HEPATICA COMMUNIS
- IB: A. SPLENICA
- IC: A. GASTRICA SIN

#### II) A. MESENTERICA SUP.

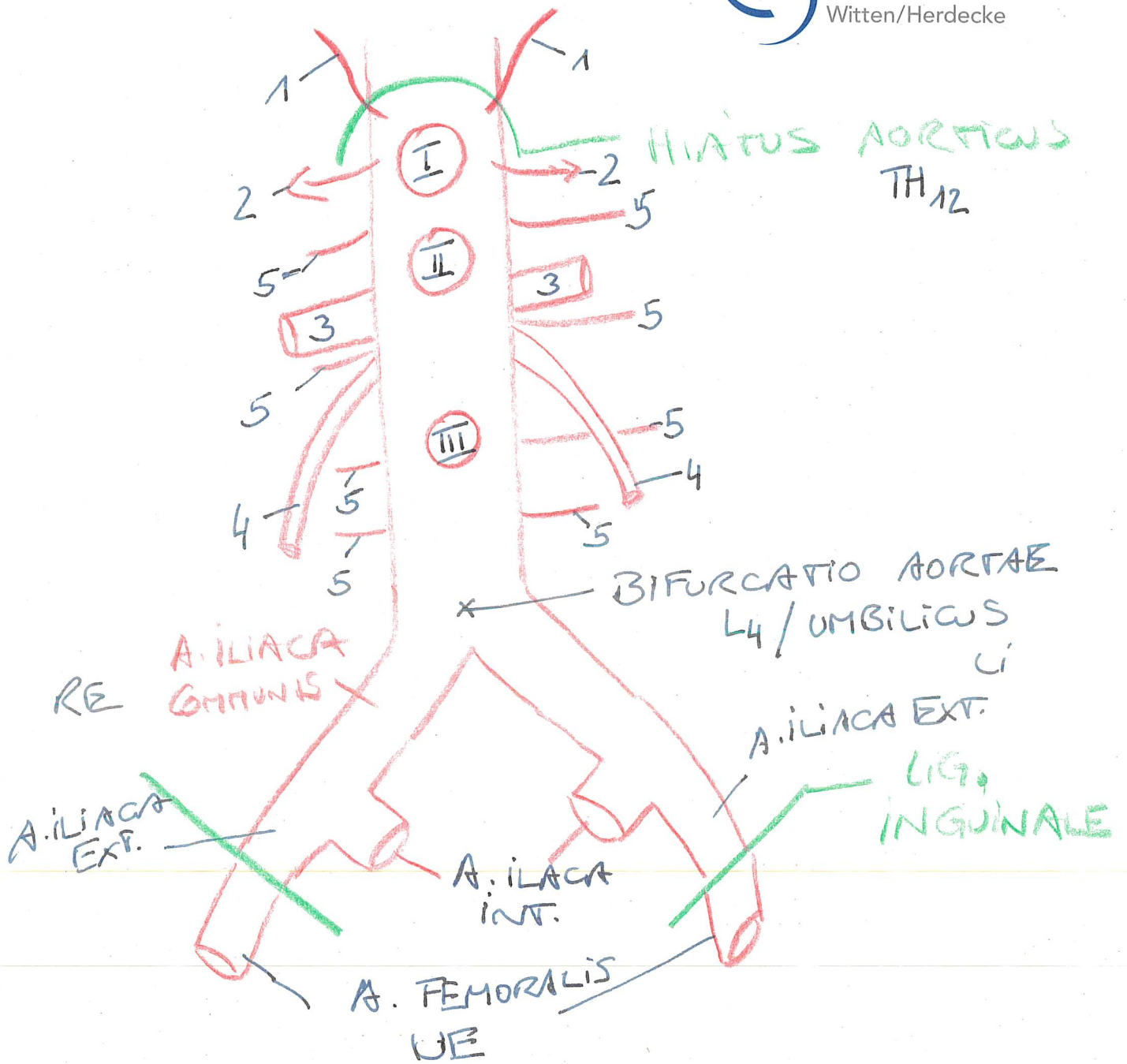
#### III) A. MESENT. INF.

II + III:

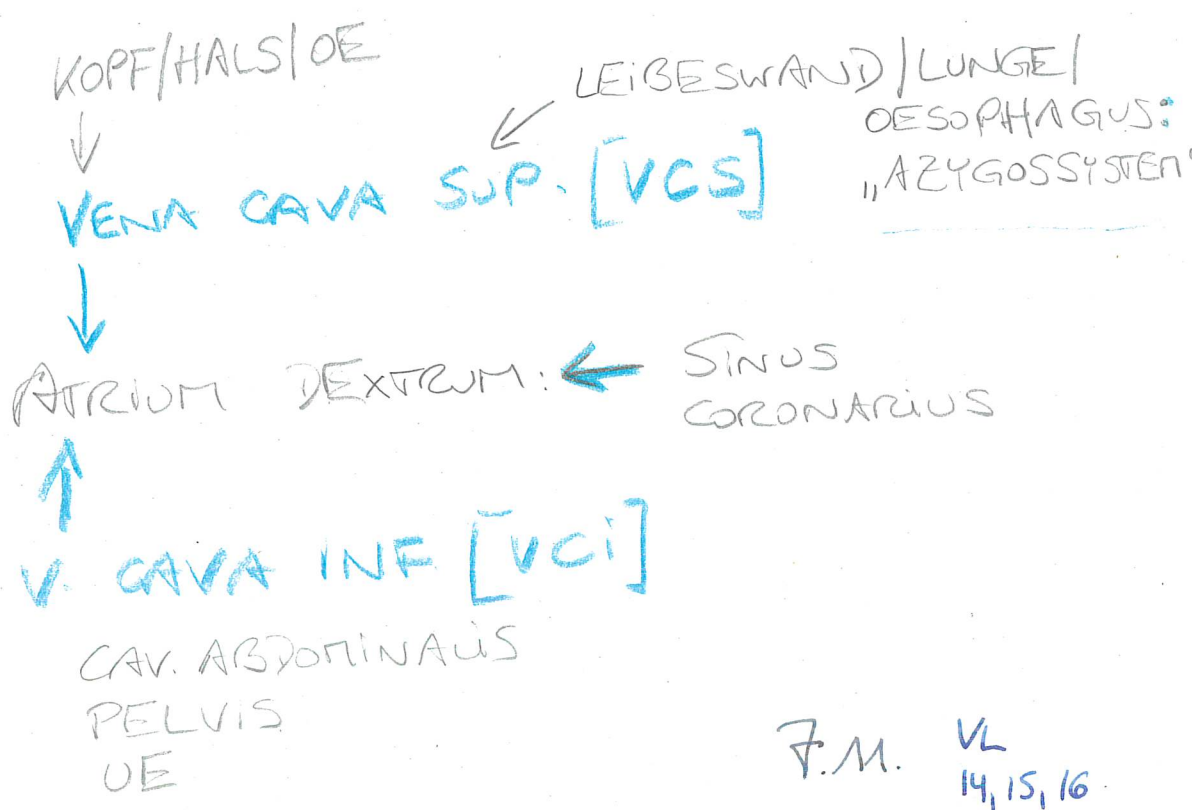
„GEKRÖSEARTERIEN“

### PAARIGE ÄSTE: RETU

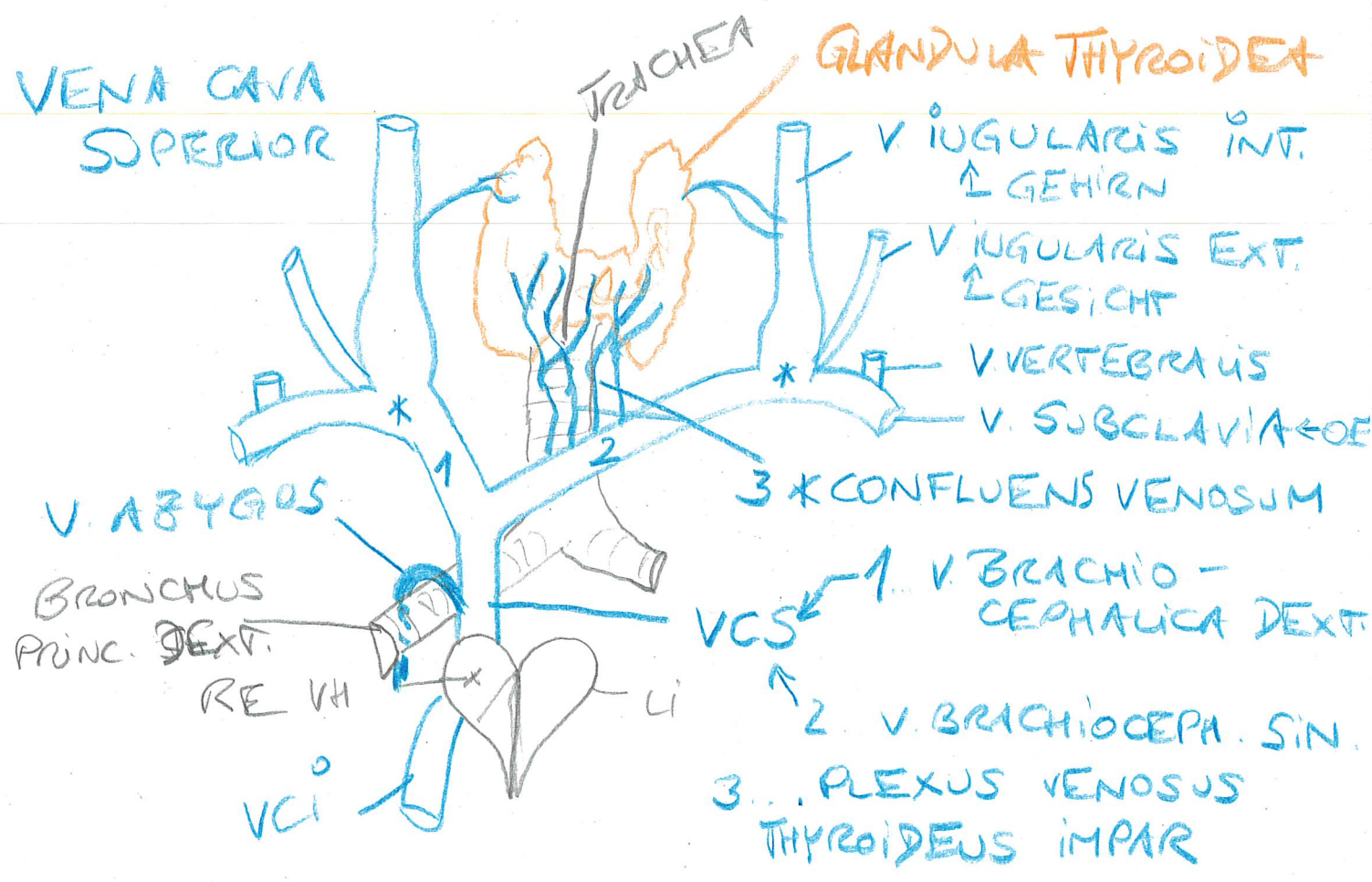
- 1) A. PHRENICA INF.
- 2) A. SUPRARENALIS MEDIA
- 3) A. RENALIS
- 4) A. OVARICA / A. TESTICULARIS
- 5) 4x AA. LUMBALIS



# VENENSYSTEM D. KÖRPER- KREISLAUFES:

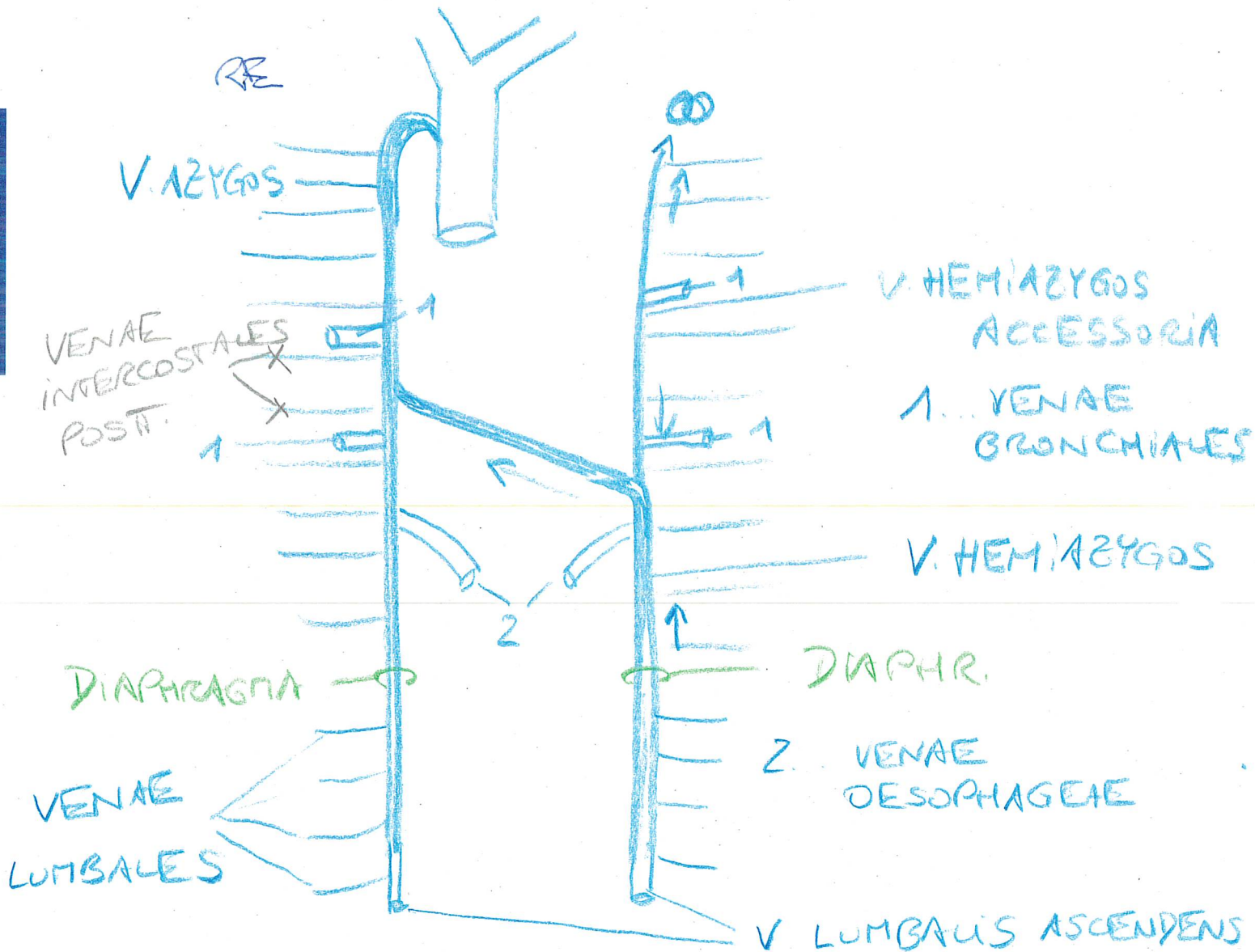


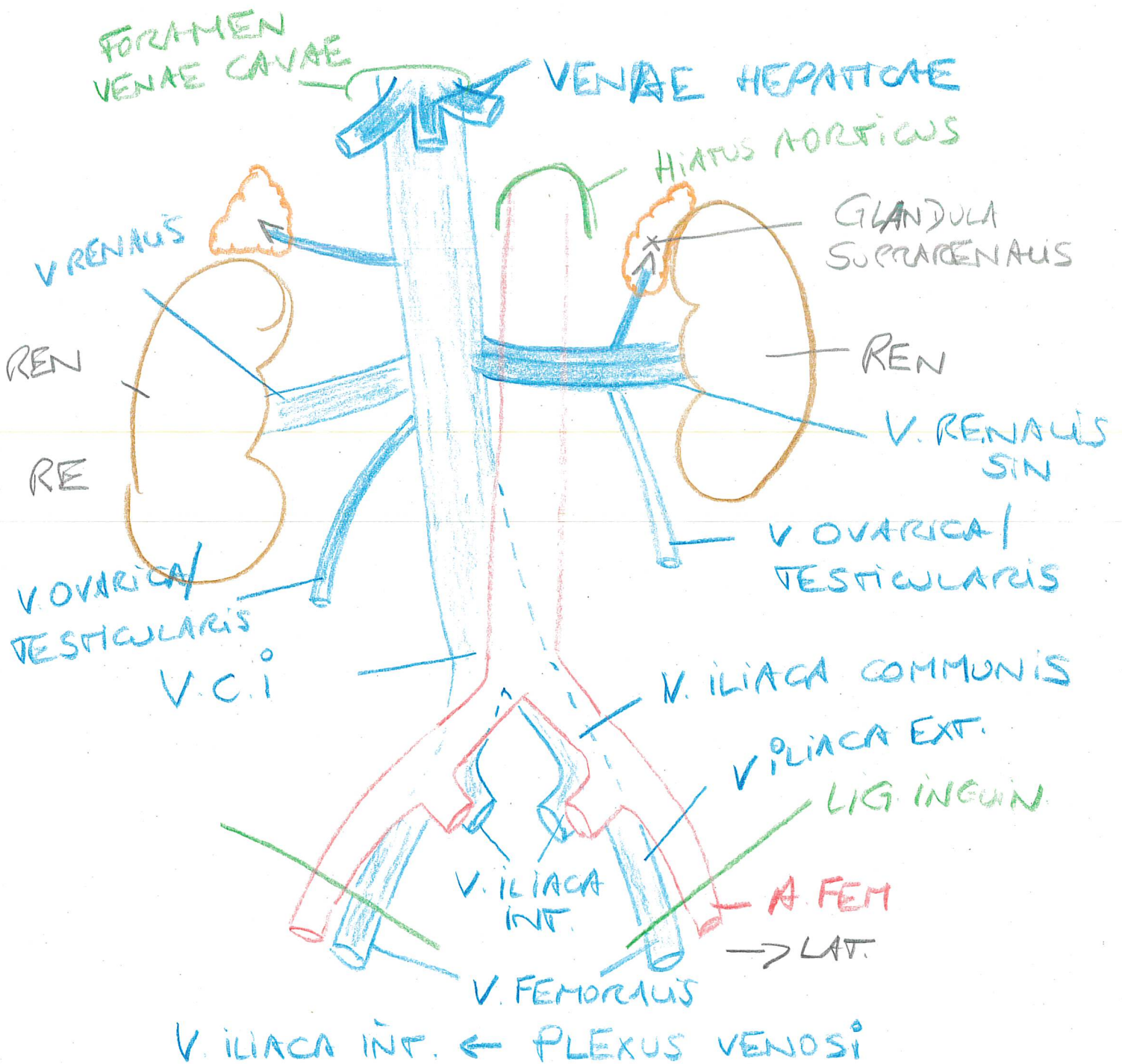
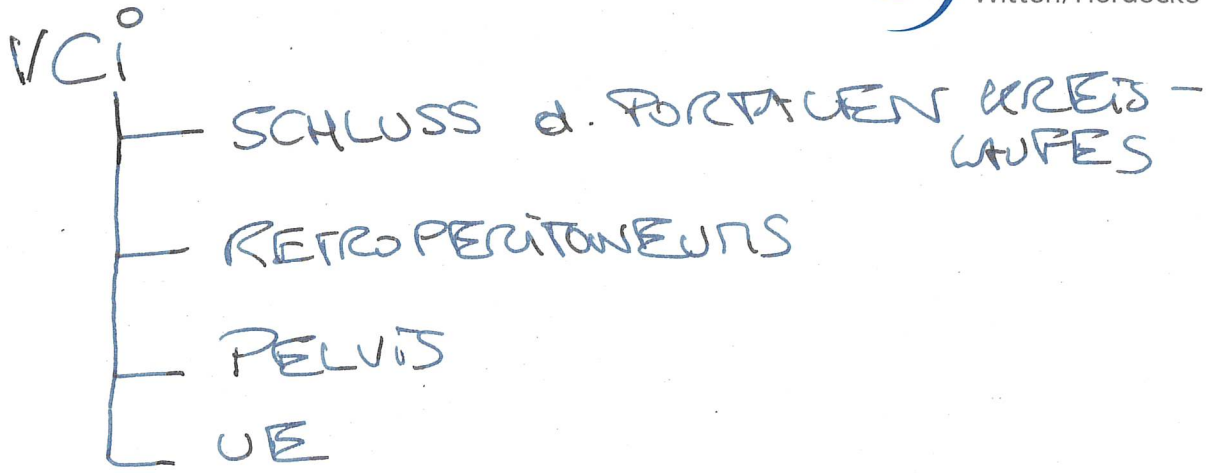
F.M. VL  
14, 15, 16



ÄZYGOSSYSTEM:

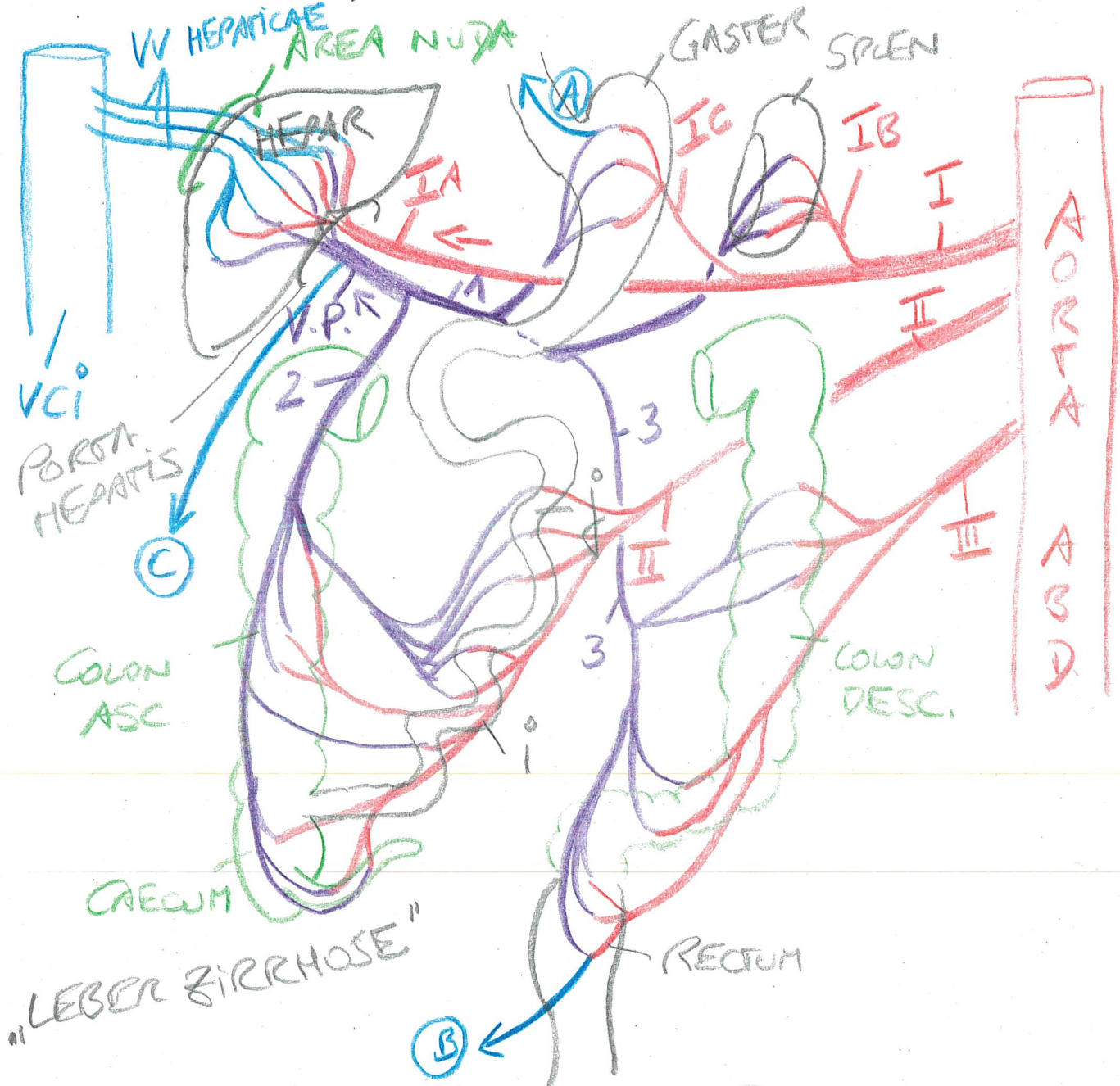
- ↑ LEIBESWAND
- LUNGE: VASA PRIVATA  
= VENAE BRONCHIALES
- OESOPHAGUS: VENAE OESOPHAGEAE







PORTALER KREISLAUF  
↳ VERDAUUNGSTRAKT



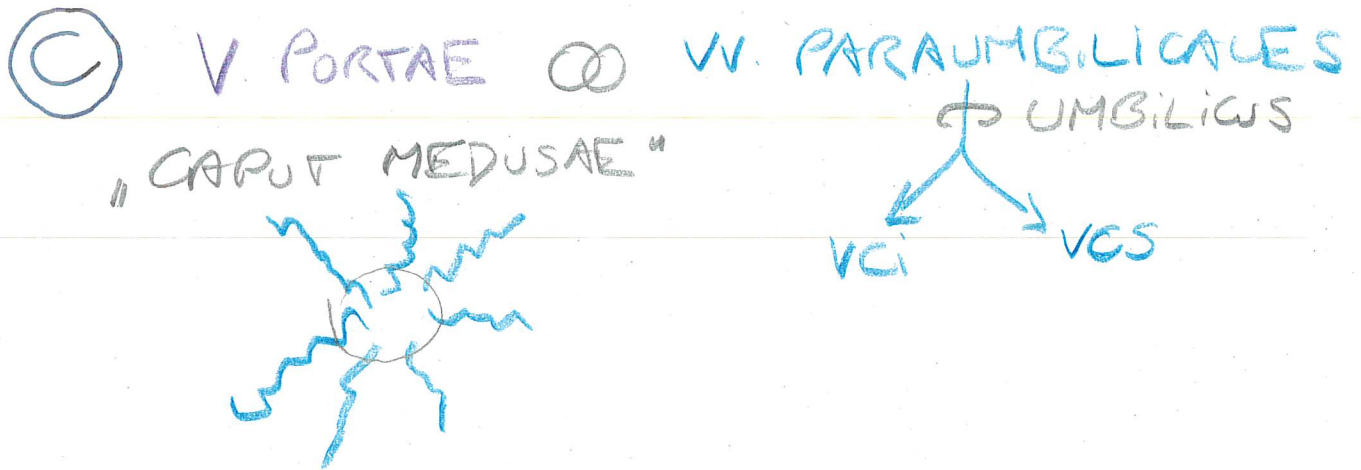
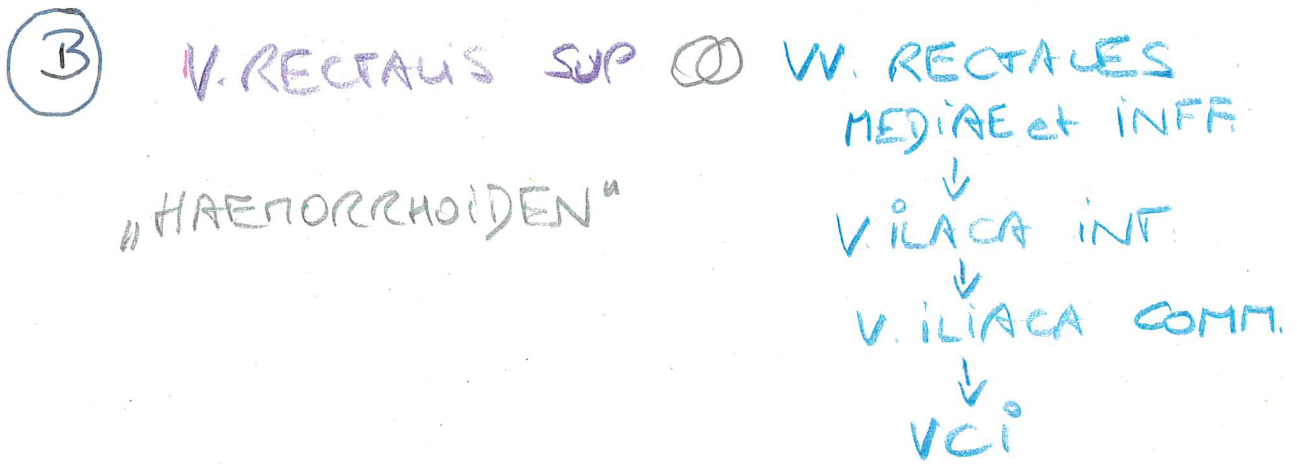
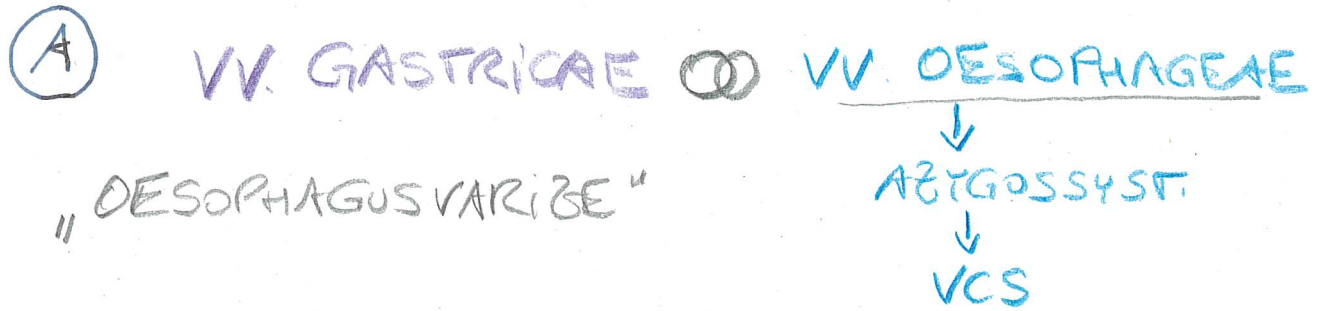
"LEBER ZIRRHOSE"

V.P. = VENA PORTAE

"PFORTADER-  
WURBEL"

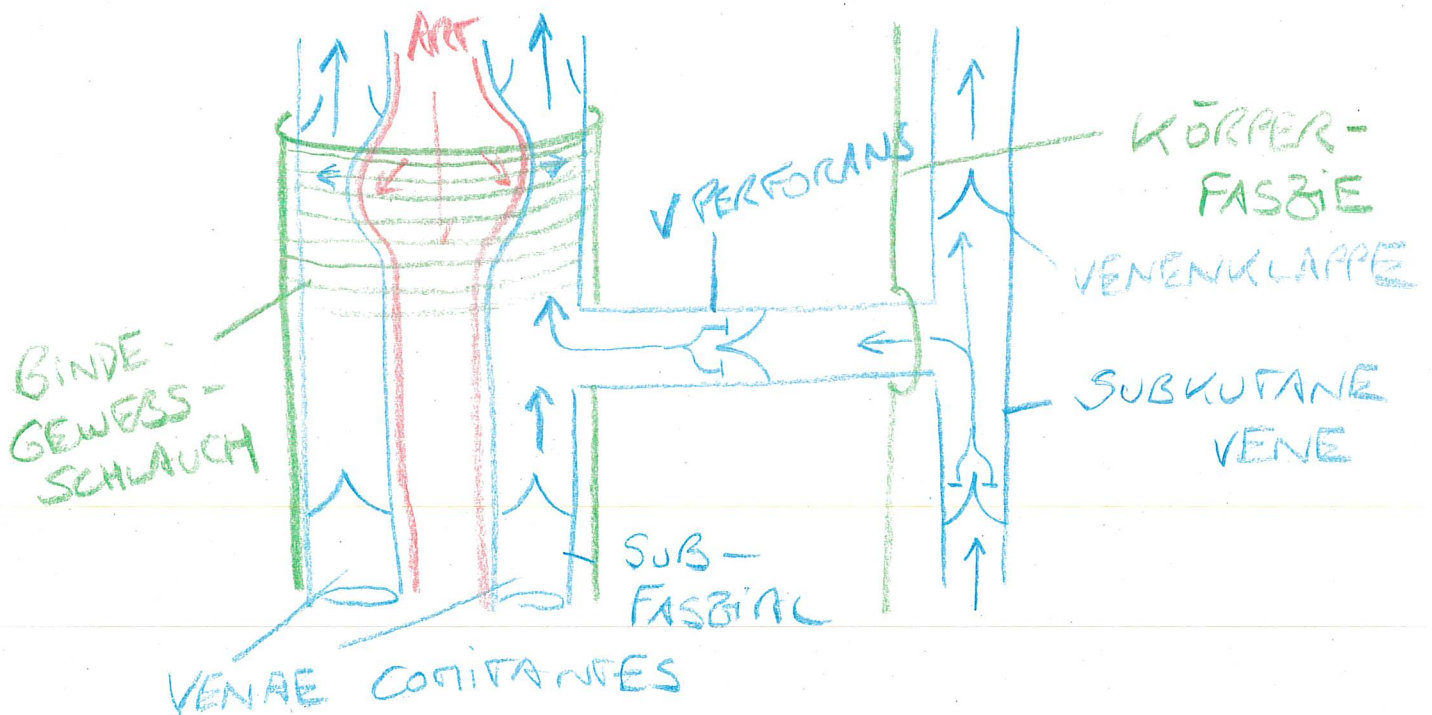
\* V. SPAENICA (1)  
 ↑ V. MESENT. INF. (3)  
 2 V. MESENT. SUR

# PORTOCAVALEN ANASTOMOSEN

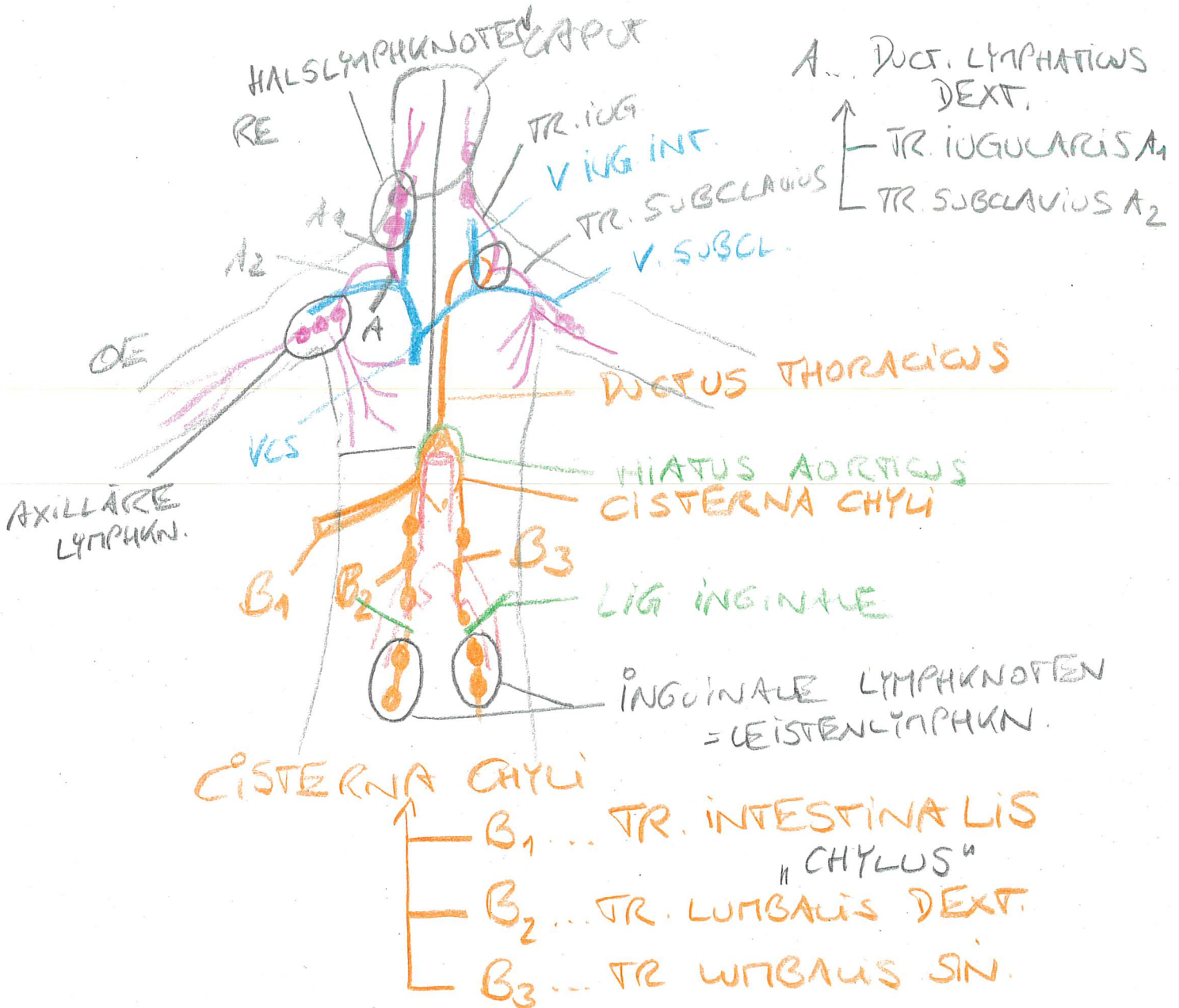
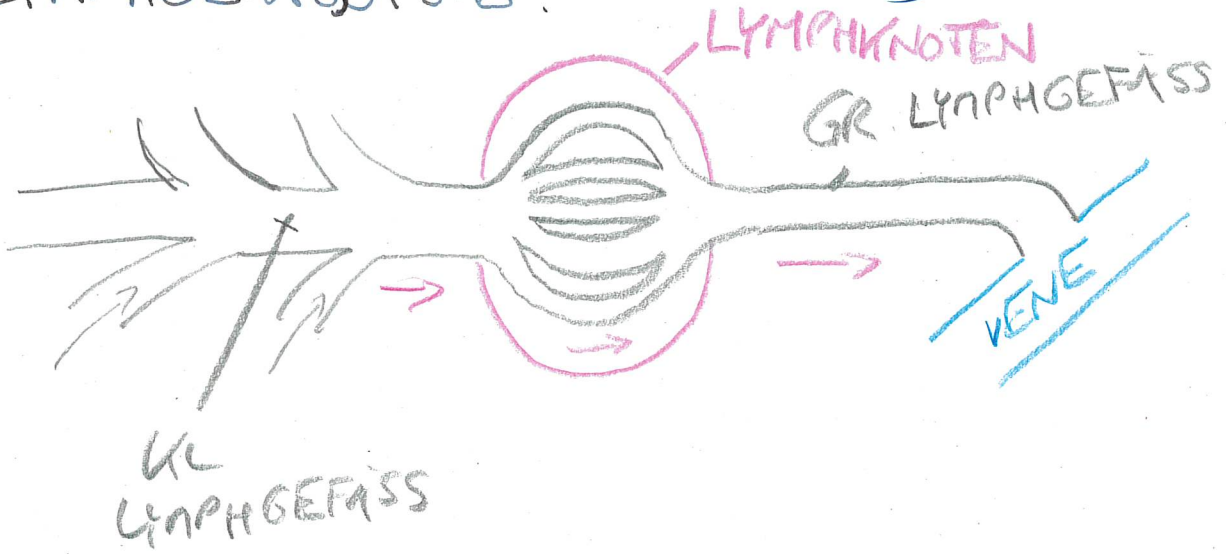


## RSCK STROPPECHANISMEN:

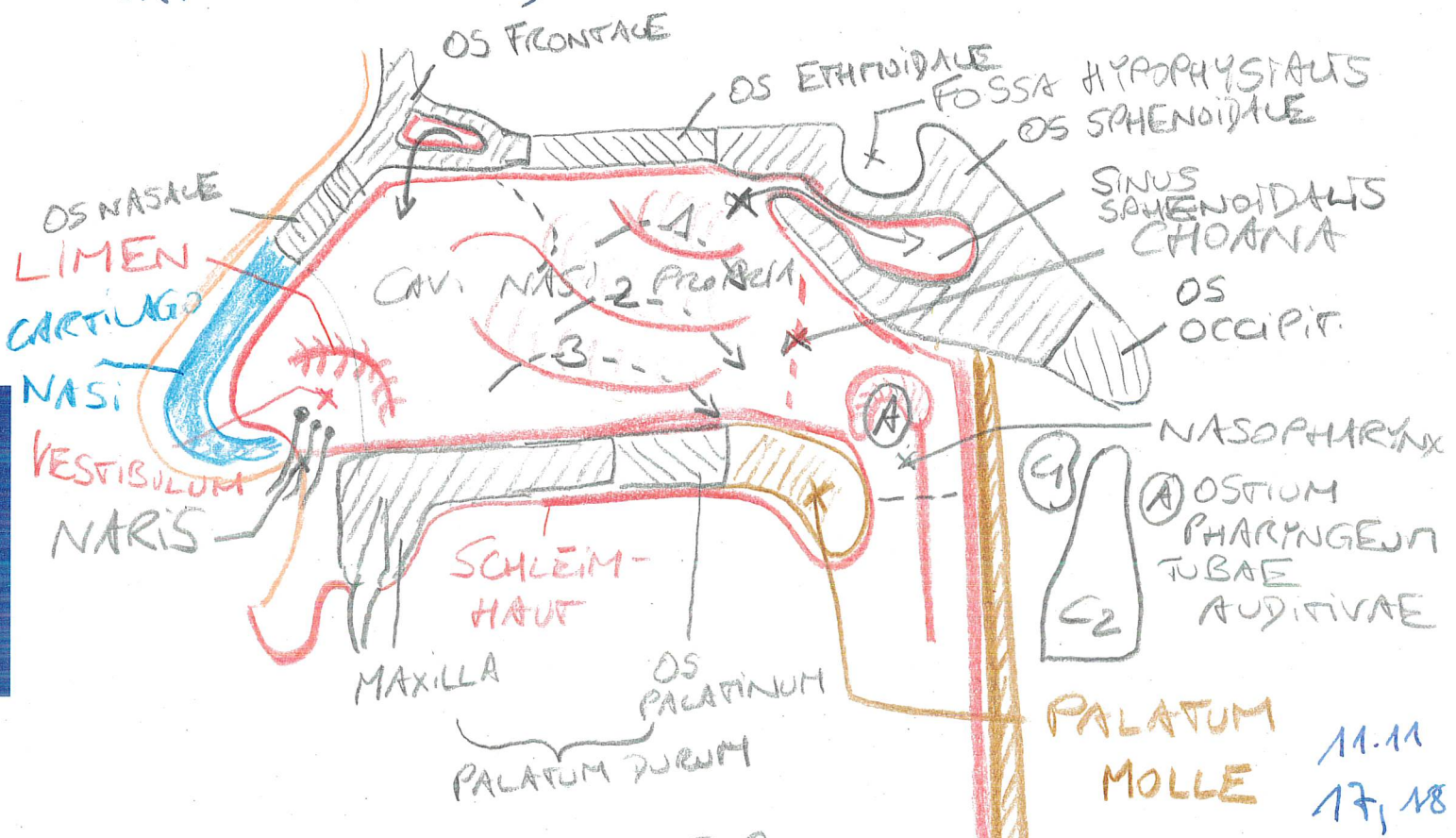
- \* UNTERDRUCK im THORAX
  - \* SCHWERKRAFT [v. KRANIAL]
  - \* MUSKELPUMPE
  - \* ARTERIOVENÖSE KOPPELUNG
  - \* VENENKLAPPEN
  - \* BINDEGEWEBSSCHLAUCH [EXTREMITÄTEN]
- SUBFASZIAL



LYMPHGEFÄSSSYSTEM



OBERER ATRIENRAUM  
SAGITTALSCHNITT  
LAT. NASENWAND d. re. CAV. NASI



- 1... CONCHA NASALIS SUP.  
---> MEATUS NASI SUP. -> CELLULAE ETHM. POST.
- 2... CONCHA NASALIS MEDIA  
---> MEATUS NASI MEDIUS -> SINUS FRONTALIS  
  - ↳ SINUS MAXILLARIS
  - ↳ CELLULAE ETHM. ANTT., BULLA ETHMOIDALIS
- 3... CONCHA NASALIS INF.  
---> MEATUS NASI INF. ← CANALIS NASOLACRIMALIS  
  - X RECESSUS SPHENOETHMOIDALIS
  - ↳ SINUS SPHENOIDALIS